

Liebherr Accessories 2020

Consumer

LIEBHERR



Freestanding & Built-in related accessories

Microfibre cloth set (3 pcs)



Description

Liebherr offers the microfibre cloth set for the hygienic and gentle cleaning of fridge and freezer interiors. This includes three 30 x 30 cm cloths. The microfibrils are very effective at absorbing impurities, which ensures that, with regular cleaning, food products can be stored hygienically. The microfibre cloths are washable up to 30 degrees and can therefore be used multiple times.

Order Info		Models	Misc. Information (Dimension , Country Code, etc.)
Art.-No	PG		
8713023	12	For all appliances	30 / 30 cm

Bottle holder



Description

The adjustable bottle holder guarantees that bottles are held safely on the inside of the appliance door.

Order Info		Models	Misc. Information (Dimension , Country Code, etc.)
Art.-No	PG		
7438298	7	For all appliances with Gallon racks: EC(B)N 50 / 61 / 62 from Index 22 CBNbe 62 from Index 22 CBNes 62 from Index 22 CNes 61 / 62 from Index 22 & BluPerformance Premium GlassLine door racks	

Set of lever handles



Description

The set of robust lever handles is easy to install and makes the appliance even more convenient to open.

Order Info		Models	Misc. Information (Dimension , Country Code, etc.)
Art.-No	PG		
9901557		CNPef 3516 CNPes 4056 CNPef 4036 CBNPes 4066 CNPef 4416 CNPef 4436 CNPef 4406 CNPef 4516 CNPef 5026 CBNPes 5066	squared



Aluminium handle



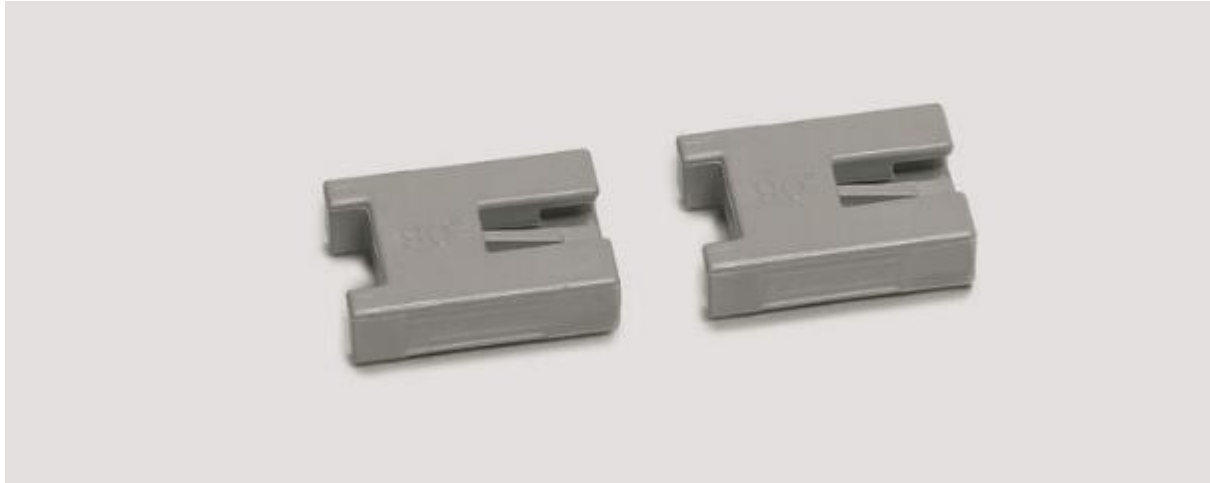
Description

This oval and robust aluminium handle can be attached as an alternative to the standard handle.

Order Info		Models	Misc. Information (Dimension , Country Code, etc.)
Art.-No	PG		
7043363		CNes 6156, CNes 6256CBNes 6256	Oval aluminium



Door opening limitation



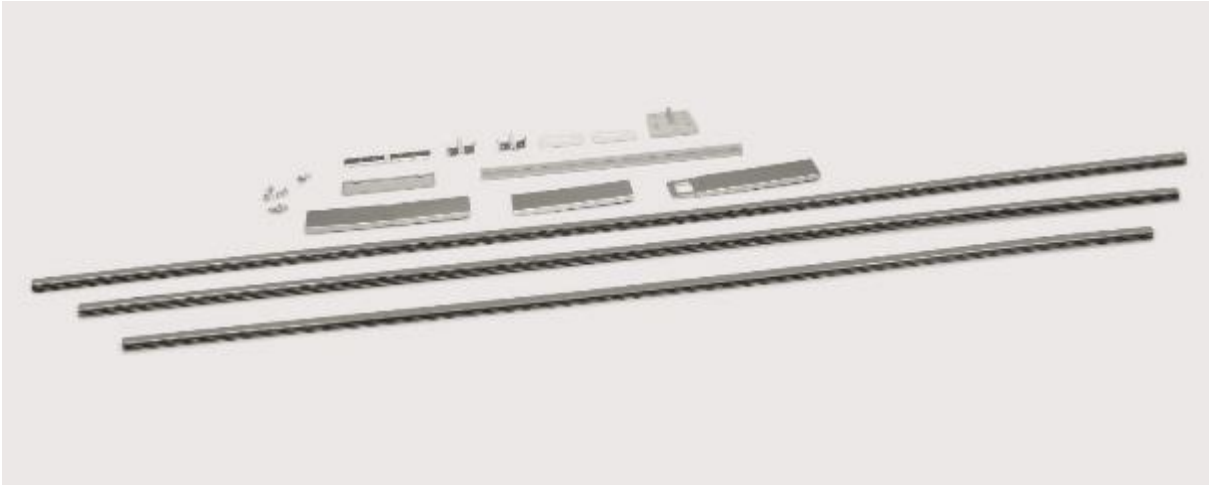
Description

The door opening angle is set to 115° at the plant, but this can be reduced to 90° by inserting the door opening limitation into the hinge. This prevents the door from crashing into walls or neighbouring furnishings and damaging them.

Order Info		Models	Misc. Information (Dimension , Country Code, etc.)
Art.-No	PG		
9096683		CNPes 4056 CBNPes 4066 CNPef 4416 CNPef 4436 CNPef 5026 CBNPes 5066 SBSes 9063	



Side-by-side set



Description

With the help of the side-by-side set, two appliances can be set up next to each other. The gap between the appliances is maintained, and they are connected cleanly by means of the cover strip.



Order Info		Models	Misc. Information (Dimension , Country Code, etc.)
Art.-No	PG		
9901555		SBSes 8063 CNPef 3516 CNPes 4056 CBNPes 4066	

Side-by-side set



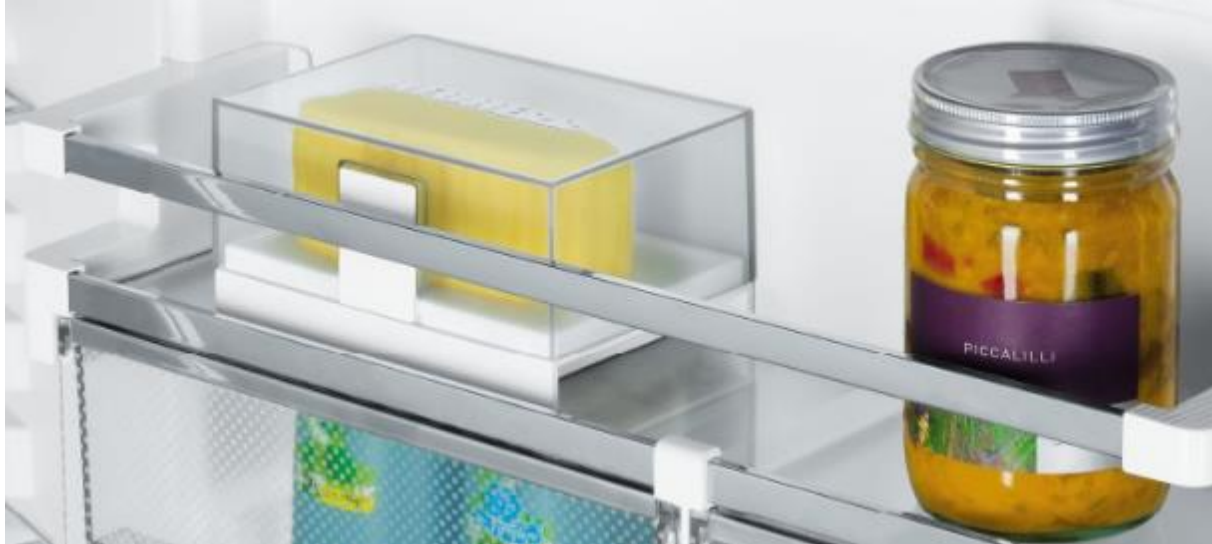
Order Info		Models	Misc. Information (Dimension , Country Code, etc.)
Art.-No	PG		
9900221		CNes 6256	

Description

With the help of the side-by-side set, two appliances can be set up next to each other. The gap between the appliances is maintained, and they are connected cleanly by means of the cover strip.



Butter dish

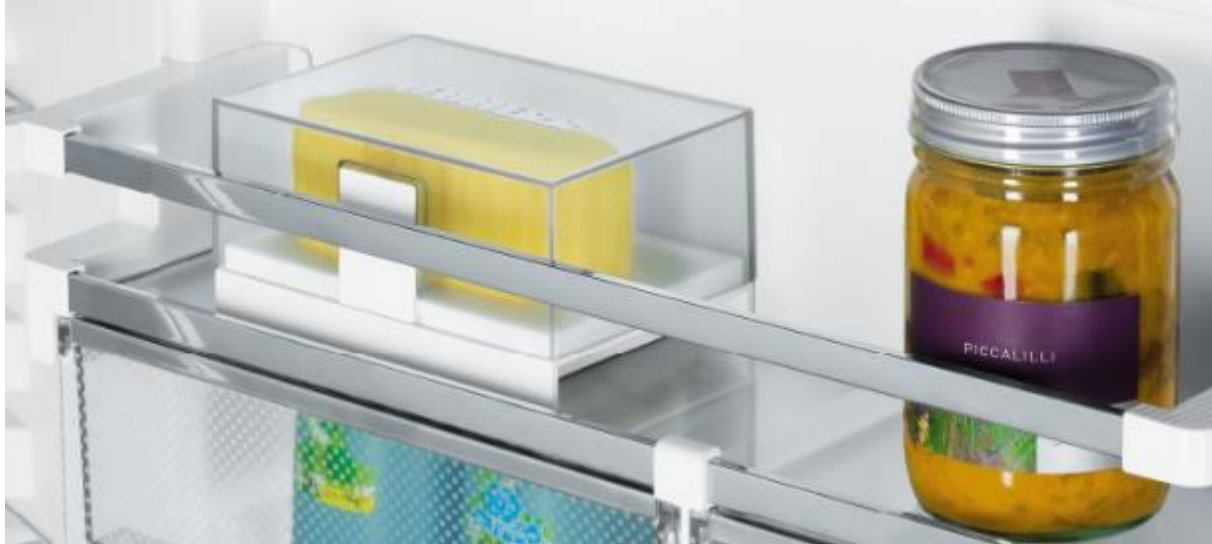


Description

Thanks to one-hand operation, the elegant butter dish can be carried conveniently by its lid and is easy to open. Due to its well-designed proportions, all kinds of butter sizes can be stored in it. It is shatterproof, dishwasher-safe and fits all Liebherr shelves.

Order Info		Models	Misc. Information (Dimension , Country Code, etc.)
Art.-No	PG		
9881170		For all Refrigerators and combinations	For all refrigerators and combinations

Butter dish



Description

Thanks to one-hand operation, the elegant butter dish can be carried conveniently by its lid and is easy to open. Due to its well-designed proportions, all kinds of butter sizes can be stored in it. It is shatterproof, dishwasher-safe and fits all Liebherr shelves.

Order Info		Models	Misc. Information (Dimension , Country Code, etc.)
Art.-No	PG		
7420306	12	For all refrigerators and combinations	For all refrigerators and combinations

Side-by-side set for height adjustment



Description

With the help of the stainless steel side-by-side set for height adjustment, the height of the appliance can be adjusted in order to compensate for uneven floors. The side-by-side set offers optimal adjustment options for the appliance, even on the adjustable feet in the back. The total height of the appliance is increased by 47 mm.

Order Info		Models	Misc. Information (Dimension , Country Code, etc.)
Art.-No	PG		
9900004-34		SBSes 8473 SBSes 8486 SBSes 8663	For Stainless Steel
9900000-04		SBSbs 8673	For Black Steel



User manual
708815600_en

Variable egg tray



Description

The variable egg tray is extendible, which means its volume can be adjusted. This means that up to 20 chicken eggs – or up to 28 quail eggs – can be stored safely at any time. It also makes it possible to store eggs with their pointed end facing down in order to extend their shelf life.

Order Info		Models	Misc. Information (Dimension , Country Code, etc.)
Art.-No	PG		
9881172		Freestanding/ Built-in appliances: For all Refrigerators and combinations	

Variable egg tray



Description

The variable egg tray is extendible, which means its volume can be adjusted. This means that up to 20 chicken eggs – or up to 28 quail eggs – can be stored safely at any time. It also makes it possible to store eggs with their pointed end facing down in order to extend their shelf life.

Order Info		Models	Misc. Information (Dimension , Country Code, etc.)
Art.-No	PG		
7423230	12	Freestanding/ Built-in appliances: For all Refrigerators and combinations	

Ice cube tray with lid



Description

The large ice cube tray with lid is easy to fill with water thanks to its convenient filling hole. The cover seals it completely, so the tray can be transported and positioned in a safe and dry manner.

Order Info		Models	Misc. Information (Dimension , Country Code, etc.)
Art.-No	PG		
9881174		Freestanding/ Built-in appliances: For all Freezers and combinations	

Ice cube tray with lid



Description

The large ice cube tray with lid is easy to fill with water thanks to its convenient filling hole. The cover seals it completely, so the tray can be transported and positioned in a safe and dry manner.

Order Info		Models	Misc. Information (Dimension , Country Code, etc.)
Art.-No	PG		
7423292	13	Freestanding/ Built-in appliances: For all Freezers and combinations	

FlexSystem

Sales packaging accessories



Description

The FlexSystem for the BioFresh safe and the BioCool box facilitates the clear and flexible storage of food. Food can be separated clearly into categories such as fruit and vegetables, or by expiry date. All parts of the stable FlexSystem are easy to clean and dishwasher-safe.

Order Info		Models	Misc. Information (Dimension , Country Code, etc.)
Art.-No	PG		
9881168		70 cm BluPerformance BioFresh and BioCool-Models	H 116 / W 116 / D 415 mm ("Ship") BluPerformance 70cm
9881128		60 cm BluPerformance BioFresh and BioCool-Models (except BP 2850 and K(ef) 3710)	H 116 / W 116 / D 415 mm ("Ship") BluPerformance 60cm
9881140		As per catalogue	H 116 / W 116 / D 415 mm ("Ship") Built-in Facelift

FlexSystem



Description

The FlexSystem for the BioFresh safe and the BioCool box facilitates the clear and flexible storage of food. Food can be separated clearly into categories such as fruit and vegetables, or by expiry date. All parts of the stable FlexSystem are easy to clean and dishwasher-safe.

Order Info		Models	Misc. Information (Dimension , Country Code, etc.)
Art.-No	PG		
7423132	16	70 cm BluPerformance BioFresh and BioCool-Models	H 116 / W 116 / D 415 mm ("Ship") BluPerformance 70cm
7413532	16	60 cm BluPerformance BioFresh and BioCool-Models (except BP 2850 and K(ef) 3710)	H 116 / W 116 / D 415 mm ("Ship") BluPerformance 60cm
7413530	14	As per catalogue	H 116 / W 116 / D 415 mm ("Ship") Built-in Facelift

Pull-out VarioBox set



Description

The two pull-out VarioBoxes make it easier to sort and store small-sized foods and provide a clear overview. They are easy to use, and the pull-out stop ensures that they are always securely attached when goods are removed. The shelf with the VarioBoxes can be inserted in several different positions on the interior door.

Order Info		Models	Misc. Information (Dimension , Country Code, etc.)
Art.-No	PG		
7420558	19	Freestanding: BluPerformance Refrigerator and Comination 60 cm Built-in: Cooling appliances and combinations	For 60cm wide models
7438894	-	CBNef 5715 CN 5715 CNef 5715 CNef 5725	For 70cm wide models

VarioSafe

Sales packaging
accessories



Description

The VarioSafe provides clarity and creates order. Smaller foods and packages, tubes and jars can be perfectly stored in the drawer. The VarioSafe can be inserted in the fridge compartment at various heights. For higher filling, a second insertion height is available if necessary.

Order Info		Models	Misc. Information (Dimension , Country Code, etc.)
Art.-No	PG		
9881028		Built-in with BioFresh and light column at both sides/ as per catalogue	481 / 98 / 283,5 mm
9881124		BioFresh fride-freezers BluPerformance 60 cm	480/ 110 / 365 mm
9881126		For BioCool Appliances K and KB	480 / 110 / 380 mm
9881156		Appliances with light column at one side	

VarioSafe



Description

The VarioSafe provides clarity and creates order. Smaller foods and packages, tubes and jars can be perfectly stored in the drawer. The VarioSafe can be inserted in the fridge compartment at various heights. For higher filling, a second insertion height is available if necessary.

Order Info		Models	Misc. Information (Dimension , Country Code, etc.)
Art.-No	PG		
7275118	18	Built-in with BioFresh and light column at both sides/ as per catalogue	481 / 98 / 283,5 mm
7275144	20	BioFresh BluPerformance 60 cm	480/ 110 / 365 mm
7275142	20	For BioCool Appliances K and KB	480 / 110 / 380 mm
7275154	20	Built-in appliances with light column at one side	

Touch-up pen (white)



Description

The touch-up pen can be used to quickly repair minor scratches on white surfaces.

For quickly repairing minor paint damage.

Order Info		Models	Misc. Information (Dimension , Country Code, etc.)
Art.-No	PG		
8301330	11	For all white freestanding appliances	



Cold storage accumulator



Description

The cold storage accumulator can maintain cooling quality in the event of a power failure. It therefore represents additional backup cooling and protects your frozen goods.

Order Info		Models	Misc. Information (Dimension , Country Code, etc.)
Art.-No	PG		
9881259		For all Chest Freezer	364 / 30 / 175 mm

Cold storage accumulator



Description

The cold storage accumulator can maintain cooling quality in the event of a power failure. It therefore represents additional backup cooling and protects your frozen goods.

Order Info		Models	Misc. Information (Dimension , Country Code, etc.)
Art.-No	PG		
7412053	15	For all Chest Freezer	364 / 30 / 175 mm

Cold storage accumulator

Sales packaging accessories



Description

The cold storage accumulator can maintain cooling quality in the event of a power failure. It therefore represents additional backup cooling and protects your frozen goods.

Order Info		Models	Misc. Information (Dimension , Country Code, etc.)
Art.-No	PG		
9881036		All combinations (except CBP), Freezers, fridges with 4* freezer compartment, all SBS, Built-in combinations and Built-in Freezers with NoFrost, SBS-Built-in with NoFrost-compartment	180 / 48,5 / 175,5 mm

Cold storage accumulator



Description

The cold storage accumulator can maintain cooling quality in the event of a power failure. It therefore represents additional backup cooling and protects your frozen goods.

Order Info		Models	Misc. Information (Dimension , Country Code, etc.)
Art.-No	PG		
7422838	12	All combinations (except CBP), Freezers, fridges with 4* freezer compartment, all SBS, Built-in combinations and Built-in Freezers with NoFrost, SBS-Built-in with NoFrost-compartment	180 / 48,5 / 175,5 mm

Cold storage accumulator



Description

The cold storage accumulator serves as backup cooling that reliably keeps your frozen goods cool in the event of a power failure. Thanks to an existing fitting it can be attached in the top of the freezer compartment in a space-saving manner.

Order Info		Models	Misc. Information (Dimension , Country Code, etc.)
Art.-No	PG		
7430458	11	ICBP 3266, ICBPi 3266, ICBS 3224, ICBS 3324, ICP 2924 ICP 3324, ICP 3334, ICS 3224 ICS 3234, ICS 3324, ICS 3334 ICU 3324, ICUS 2924, ICUS 3224, ICUS 3324, UG 1211 UIG 1313, UIG 1323, SUIG 1514, SUIGN 3554	230,5 / 32 / 160 mm

Water filter



Description

Filtered water for pure enjoyment! The water filter reduces deposits, rust, and the taste and smell of chlorine. This means that there is always a supply of fresh water and ice for cold drinks – and always in top quality. The water filter should be replaced every 6 months at the latest.

Order Info		Models	Misc. Information (Dimension , Country Code, etc.)
Art.-No	PG		
9880980		CBNbe, es 6256, 6246 CNes 6156, 6256 ECBN 50 / 61 / 62 ECN 5036, ECN 6156,ECN 6256 EGN 9171,EGN 9271,EGN 9471 EGN 9671,EKB 9471,EKB 9671 SBS 95E3,SBS 96E2	Diameter 60 mm Length 181,2 mm Successor of aH WF 988122700

Water filter



Description

Filtered water for pure enjoyment! The water filter reduces deposits, rust, and the taste and smell of chlorine. This means that there is always a supply of fresh water and ice for cold drinks – and always in top quality. The water filter should be replaced every 6 months at the latest.

Order Info		Models	Misc. Information (Dimension , Country Code, etc.)
Art.-No	PG		
7440002	19	CBNbe, es 6256, 6246 CNes 6156, 6256 ECBN 50 / 61 / 62 ECN 5036, ECN 6156,ECN 6256 EGN 9171,EGN 9271,EGN 9471 EGN 9671,EKB 9471,EKB 9671 SBS 95E3,SBS 96E2	Diameter 60 mm Length 181,2 mm

Divider freezer compartment



Description

The drawer divider for upper & lower freezer compartment drawer can be used to split the freezer drawer into sections so as to impose order and keep an overview of the frozen goods. It can be easily adjusted.



Order Info		Models	Misc. Information (Dimension , Country Code, etc.)
Art.-No	PG		
9033012		ECBN 5066 ab Index 22	
9033016		CBNbe 6256 ab Index 22 CBNes 6256 ab Index 24 CNes 6156 ab Index 22 CNes 6256 ab Index 22 ECBN 6156 ab Index 22 ECBN 6256 ab Index 22 ECN 6156 ab Index 22 ECN 6256 ab Index 22	

Divider freezer compartment



Description

The flexible drawer divider for upper freezer compartment drawer can be used to separate the freezer drawer into sections so as keep the order and keep a good overview of the frozen goods stored. With this flat divider you can create a larger icebox section for storing more ice cubes whilst still keeping the other section nice and tidy.

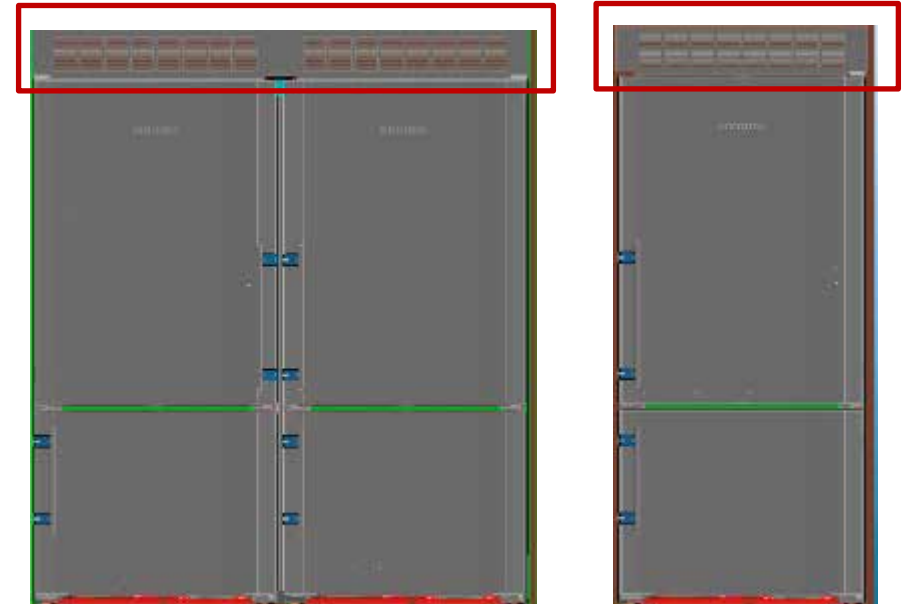
Order Info		Models	Misc. Information (Dimension , Country Code, etc.)
Art.-No	PG		
9033014		CBNbe 6256 ab Index 22 CBNes 6256 ab Index 24 CNes 6156 ab Index 22 CNes 6256 ab Index 22 ECBN 6156 ab Index 22 ECBN 6256 ab Index 22 ECN 6156 ab Index 22 ECN 6256 ab Index 22	
9033018		ECBN 5066 137 22 ECBN 5066 237 22 ECBN 5066 213 22	

Ventilation grille 30" and 60"



Description

The robust and decorative ventilation grille contributes to the air circulation behind closed surfaces. Ideal for upright devices positioned in niches.



Order Info		Models	Misc. Information (Dimension , Country Code, etc.)
Art.-No	PG		
9901523		CNPef 4406, CNPef 4416, CNPef 4436, CNPef 4516, CNPef 5026, CBNPes 5066	
9901521		CNPef 4406, CNPef 4436, SBSes 9063	



Freestanding related accessories

Glass shelf



Description

The entire glass shelf offers additional storage space in the fridge or can replace the existing, detachable glass shelf



Order Info		Models	Misc. Information (Dimension , Country Code, etc.)
Art.-No	PG		
7272812		TP 1724 TPesf 1714	

SmartDeviceBox (white)



Description

The SmartDeviceBox allows SmartDevice-enabled Liebherr appliances to be connected for easy and safe control via mobile devices. With SmartHomePlus, SafetyPlus and ServicePlus, Liebherr offers more safety, service and convenience.

For more, see:
www.smartdevice.liebherr.com.

Order Info		Models	Misc. Information (Dimension , Country Code, etc.)
Art.-No	PG		
6125088 6125233	23	For all refrigerators with a SDB	69,5 x 28 x 18,6 mm



3-metre appliance cord (for EU)



Description

If the standard 2.10-metre cord is inadequate, the 3-metre appliance cord allows appliances to be positioned more flexibly. The appliance cord can be removed from the appliance and replaced easily and with little effort.

Order Info		Models	Misc. Information (Dimension , Country Code, etc.)
Art.-No	PG		
6009158	12	BluPerformance appliances	3 meters (Standard length 2.10 meters)



3-metre appliance cord (for CH and GB)



Description

If the standard 2.10-metre cord is inadequate, the 3-metre appliance cord allows appliances to be positioned more flexibly. The appliance cord can be removed from the appliance and replaced easily and with little effort.

Order Info		Models	Misc. Information (Dimension, Country Code, etc.)
Art.-No	PG		
6009184	13	BluPerformance appliances	For CH
6009186	12	BluPerformance appliances	For GB

Mains supply line for Europe, Korea



Description

Regional requirements require different mains supply line for different countries. That is why we offer this mains supply line for appliances sold in Europe and Korea.

Order Info		Models	Misc. Information (Dimension, Country Code, etc.)
Art.-No	PG		
6009158		Additional for Korea: SBSes 8474 A07 SBSes 8673 A07 SBSes 8486 A07 SBNes 4265 A07 SKBes 4350 A07 SKBes 4360 A07 SGNPes 4365 A07 SWTNes 4265 A07	For Europe, eg 001, 088,... executions, as well as Korea A07

Mains supply line for Japan



Description

Regional requirements require different mains supply lines for different countries. That is why we offer this mains supply line for appliances sold in Japan.

Order Info		Models	Misc. Information (Dimension, Country Code, etc.)
Art.-No	PG		
9096167		SBSes 8486 A08 SKBes 4360 A08 SWTNes 4265 A08	For Japan



Mains supply line for Britain, Singapore, Malaysia, Hong Kong



Cancelled as accessory

Description

Regional requirements require different mains supply line for different countries. That is why we offer this mains supply line for appliances sold in Britain, Singapore, Malaysia and Hong Kong.

Order Info		Models	Misc. Information (Dimension, Country Code, etc.)
Art.-No	P		
6009168		Additional for Singapore, Malaysia and Hong Kong: SBSes 8474 A07 SBSes 8673 A07 SBSes 8486 A07 SBNes 4265 A07 SKBes 4350 A07 SKBes 4360 A07 SGNPes 4365 A07 SWTNes 4265 A07	For GB 147 execution as well as for Singapore, Malaysia, HongKong

Mains supply line for Indonesia



Cancelled as accessory

Description

Regional requirements require different mains supply lines for different countries. That is why we offer this mains supply line for appliances sold in Indonesia.

Order Info		Models	Misc. Information (Dimension, Country Code, etc.)
Art.-No	PG		
9096163		SBSes 8474 A07 SBSes 8673 A07 SBSes 8486 A07 SBNes 4265 A07 SKBes 4350 A07 SKBes 4360 A07 SGNPes 4365 A07 SWTNes 4265 A07	For Indonesia

Mains supply line for India



Cancelled as accessory

Description

Regional requirements require different mains supply lines for different countries. That is why we offer this mains supply line for appliances sold in India.

Order Info		Models	Misc. Information (Dimension, Country Code, etc.)
Art.-No	PG		
9096165		SBSes 8474 A07 SBSes 8673 A07 SBSes 8486 A07 SBNes 4265 A07 SKBes 4350 A07 SKBes 4360 A07 SGNPes 4365 A07 SWTNes 4265 A07	For India

Mains supply line for Argentina



Description

Additional mains cable for specific regions: The 2.2 metre long mains cable with country-specific plug is appropriate for built-in appliances in Argentina. It enables adaptation to the installation location.

Order Info		Models	Misc. Information (Dimension, Country Code, etc.)
Art.-No	PG		
9096191		SBNes 4265 A07, SBSes 8474 A07 SBSes 8484 A07, SBSes 8486 A07 SBSes 8673 A07, SBSes 8683 SBSes 8683 A07, SGNPes 4365 A07 SKBes 4350 A07, SKBes 4360 A07 SWTNes 4265 A07	For Argentina
6009029		ICBN 3386 001	
6009033		SGNef 3036 001 SKef 4260 001	



Mains supply line for Chile



Description

Regional requirements require different mains supply lines for different countries. That is why we offer this mains supply line for appliances sold in Chile.

Order Info		Models	Misc. Information (Dimension, Country Code, etc.)
Art.-No	PG		
9096193		SBNes 4265 A07 SBSes 8474 A07 SBSes 8484 A07 SBSes 8486 A07 SBSes 8673 A07 SBSes 8683 SBSes 8683 A07 SGNPes 4365 A07 SKBes 4350 A07 SKBes 4360 A07 SWTNes 4265 A07	For Chile

3-metre hose for the IceMaker



Description

If the 1.5-metre hose included in delivery as standard is inadequate, the 3-metre reinforced flexible line for appliances with an IceMaker and a 3/4" mains water connection allows appliances to be positioned more flexibly. It is robust and easy to replace.

Order Info		Models	Misc. Information (Dimension , Country Code, etc.)
Art.-No	PG		
6030041	24	All appliances with fixed fresh water supply	Dimension 3 meter (Standard length 1,5 meter)

Stainless steel polish 250 ml



Description

The stainless steel polish allows stainless steel surfaces to be polished gently. The polish is not suitable for SmartSteel surfaces.

Order Info		Models	Misc. Information (Dimension , Country Code, etc.)
Art.-No	PG		
8409030	14	For wine appliances without smart steel as well stainless steel panels	



Stainless steel cleaner 250 ml



Order Info		Models	Misc. Information (Dimension , Country Code, etc.)
Art.-No	PG		
8409022	11	For wine appliances without smart steel as well stainless steel panels	

Description

The stainless steel cleaner removes fingerprints, streaks and stains from stainless steel surfaces quickly, reliably and without streaks while also preventing rust. It must not be used to clean SmartSteel surfaces.



Bottle shelf (1/7)



Description

The bottle shelf is a practical and elegant solution for the storing of drinks.

Order Info		Models	Misc. Information (Dimension , Country Code, etc.)
Art.-No	PG		
9881801		CT(sl) 3306 CTP(esf) 3016 K(sl) 2630 K(sl) 3130	513,5 / 43,4 / 320,5 mm
9881802		CTN(esf) 3223 CTN(esf) 3663	480 / 43,4 / 300 mm
9881026		See online	480 / 43,4 / 280 mm

Bottle shelf (2/7)



Description

The bottle shelf is a practical and elegant solution for the storing of drinks.

Order Info		Models	Misc. Information (Dimension , Country Code, etc.)
Art.-No	PG		
9881030		See online	478 / 43,5 / 280 mm Comfort
9881074		See pmöome	513,5 / 43,4 / 326 mm
9881130		60 cm: BioFresh Combination BluPerformance	478 x 342,5 mm

Bottle shelf (3/7)



Description

The bottle shelf is a practical and elegant solution for the storing of drinks.

Order Info		Models	Misc. Information (Dimension , Country Code, etc.)
Art.-No	PG		
9881800		See online	480 / 43,4 / 320,5 mm
9881080		See online	478 / 43,5 / 256 mm Comfort
9881078		See online	479 / 43,5 / 280 mm Premium

Bottle shelf (4/7)



Description

The bottle shelf is a practical and elegant solution for the storing of drinks.

Order Info		Models	Misc. Information (Dimension , Country Code, etc.)
Art.-No	PG		
9881132		60cm BluPerformance: K(P), KB(P), CN(P), as well SBS BluPerformance	478 x 358,5 mm
9881150		CBNef 5715, CBNef 5735 CBNes 5778, CBNPbe 5758 CBNPbe 5778, CBNPes 5758, CN 5715, CNef 5715 CNef 5725, CNef 5735 CNef 5745, SKBes 4380	

Bottle shelf (5/7)



Description

The bottle shelf is a practical and elegant solution for the storing of drinks.

Order Info		Models	Misc. Information (Dimension , Country Code, etc.)
Art.-No	PG		
9881076		CBNPes 4046, CBNPes 4066 SBS 7212, SBS 7242 SBS 7252, SBS 7262, SBSbs 7253, SBSbs 7263, SBSbs 7353, SBSef 7242, SBSes 7165, SBSes 7252 SBSes 7253, SBSes 7353, SBSes 8064, SBSesf 7212 SK 4210, SK 4240, SK 4260, SKBbs 4210, SKBef 4260 SKBes 4210, SKBes 4213, SKbs 4210, SKef 4200 SKef 4260, SKes 4210, SKesf 4240	513,5 / 43,4 / 310 mm

Bottle shelf (1/7)



Description

The bottle shelf is a practical and elegant solution for the storing of drinks.

Order Info		Models	Misc. Information (Dimension , Country Code, etc.)
Art.-No	PG		
7112826	14	CT(sl) 3306 CTP(esf) 3016 K(sl) 2630 K(sl) 3130	513,5 / 43,4 / 320,5 mm
7112828	17	CTN(esf) 3223 CTN(esf) 3663	480 / 43,4 / 300 mm
7112442	17	See online	480 / 43,4 / 280 mm

Bottle shelf (2/7)



Description

The bottle shelf is a practical and elegant solution for the storing of drinks.

Order Info		Models	Misc. Information (Dimension , Country Code, etc.)
Art.-No	PG		
7112506	13	See online	478 / 43,5 / 280 mm Comfort
7112446	14	See online	513,5 / 43,4 / 326 mm
7112510	13	60 cm: BioFresh Combination BluPerformance	478 x 342,5 mm

Bottle shelf (3/7)



Description

The bottle shelf is a practical and elegant solution for the storing of drinks.

Order Info		Models	Misc. Information (Dimension , Country Code, etc.)
Art.-No	PG		
7112822	14	See online	480 / 43,4 / 320,5 mm
7112504	14	See online	478 / 43,5 / 256 mm Comfort
7112502	15	See online	479 / 43,5 / 280 mm Premium

Bottle shelf (4/7)



Description

The bottle shelf is a practical and elegant solution for the storing of drinks.

Order Info		Models	Misc. Information (Dimension , Country Code, etc.)
Art.-No	PG		
7112508	13	60cm BluPerformance: K(P), KB(P), CN(P), as well SBS BluPerformance	478 x 358,5 mm
7112518	16	CBNef 5715, CBNef 5735 CBNes 5778, CBNPbe 5758 CBNPbe 5778, CBNPes 5758, CN 5715, CNef 5715 CNef 5725, CNef 5735 CNef 5745, SKBes 4380	

Bottle shelf (5/7)



Description

The bottle shelf is a practical and elegant solution for the storing of drinks.

Order Info		Models	Misc. Information (Dimension , Country Code, etc.)
Art.-No	PG		
7112448	14	CBNPes 4046, CBNPes 4066 SBS 7212, SBS 7242 SBS 7252, SBS 7262, SBSbs 7253, SBSbs 7263, SBSbs 7353, SBSef 7242, SBSes 7165, SBSes 7252 SBSes 7253, SBSes 7353, SBSes 8064, SBSesf 7212, SK 4210, SK 4240, SK 4260, SKBbs 4210, SKBef 4260, SKBes 4210, SKBes 4213, SKbs 4210, SKef 4200, SKef 4260, SKes 4210, SKesf 4240	513,5 / 43,4 / 310 mm

Bottle shelf (6/7)



Description

The bottle shelf is a practical and elegant solution for the storing of drinks.

Order Info		Models	Misc. Information (Dimension , Country Code, etc.)
Art.-No	PG		
7113257	18	CNPef 44 / 46 / 50	
7113023	17	CNP(ef) 35 / 40	

Bottle shelf (7/7)



Description

The bottle shelf is a practical and elegant solution for the storing of drinks.

Order Info		Models	Misc. Information (Dimension , Country Code, etc.)
Art.-No	PG		
7112325	17	CBNP 5056 CBNPes 5066	647,9 / 36 / 310
7112341	17	CNPesf 5156 CNPesf 4613	647,9 / 36 / 326

FreshAir activated charcoal filter



Description

The FreshAir activated charcoal filter cleans the circulating air and quickly binds unpleasant odours. It is easy to replace and ensures optimum air quality. We recommend that you replace it every year. In BluPerformance models, the reminder function tells you when the filter will need to be replaced.

Order Info		Models	Misc. Information (Dimension , Country Code, etc.)
Art.-No	PG		
9881116		All BluPerformance appliances & Monolith models	H 15mm, D 39,3 mm Set of 2x filters
9881289		See online WINE eg. EWT, UWKes, UWT,..	43,3 / 28,4 / 33 mm Set of 2x filters
9881291		See online WINE eg. WKb, WKt, WKes, WKr, WTb, WTes, Wtpes, SWTNes	Diameter: 51,1 / L: 44 mm Set of 2x filters
9881287		WKes 653,ZKes 453	43 / 76,5 / 32 mm Set of 2x filters



FreshAir activated charcoal filter



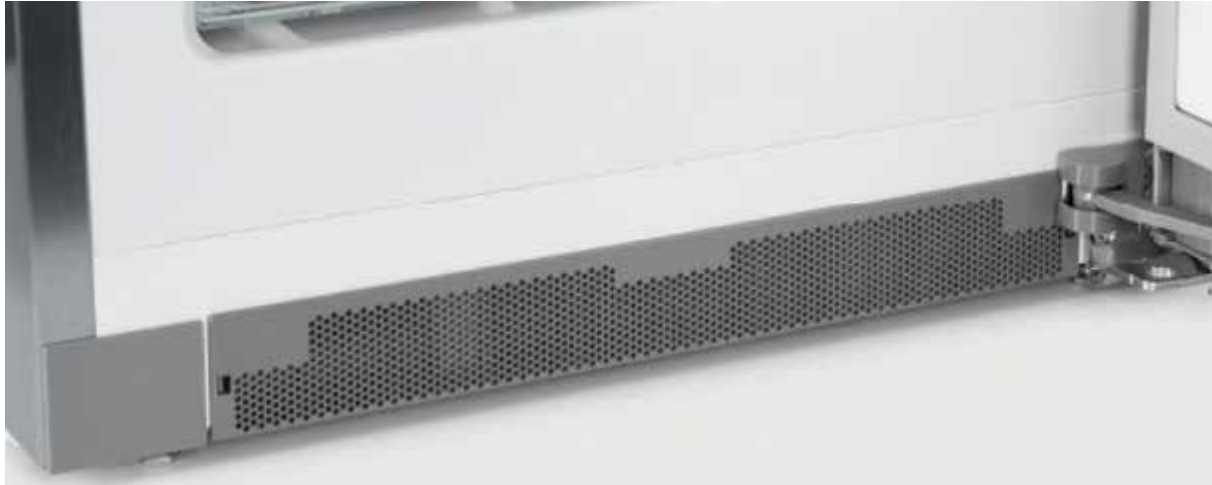
Description

The FreshAir activated charcoal filter cleans the circulating air and quickly binds unpleasant odours. It is easy to replace and ensures optimum air quality. We recommend that you replace it every year. In BluPerformance models, the reminder function tells you when the filter will need to be replaced.

Order Info		Models	Misc. Information (Dimension , Country Code, etc.)
Art.-No	PG		
9096342	13	All BluPerformance appliances & Monolith models	H 15mm, D 39,3 mm 1 piece
7433243	13	See online WINE eg. EWT, UWKes, UWT,..	Diameter: 51,1 / L: 44 mm 1 piece
7434557	13	See online WINE eg. WKb, WKt, WKes, WKr, WTb, WTes, Wtpes, SWTNes	43,3 / 28,4 / 33 mm 1 piece
7440699	12	WKes 653,ZKes 453	43 / 76,5 / 32 mm 1 piece



Grey base trim

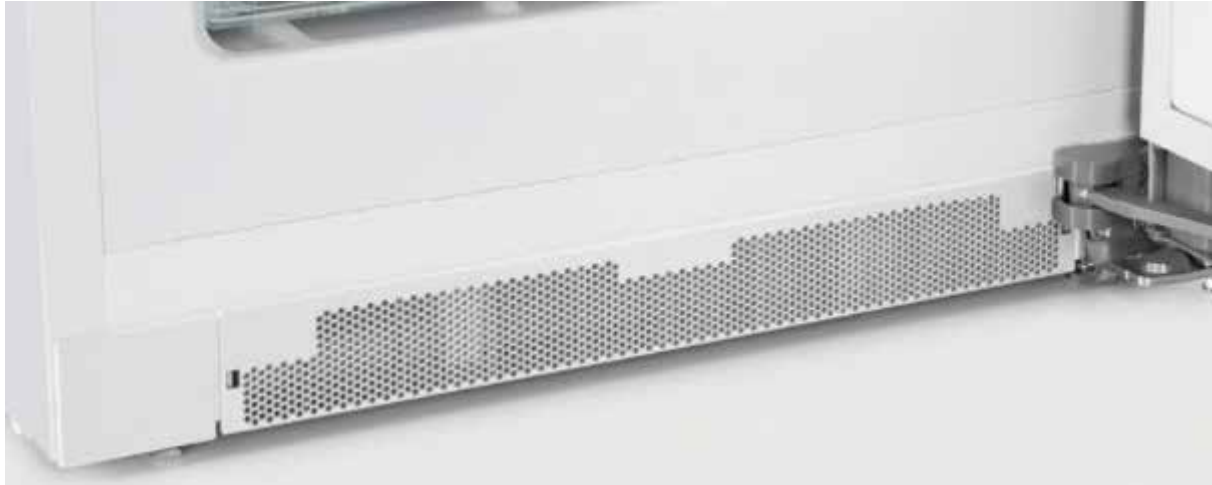


Description

As an alternative to the standard base trim with slots, a grey base trim with fine holes can be inserted in BluPerformance appliances. It prevents dust getting onto the appliance and impairing its performance.

Order Info		Models	Misc. Information (Dimension , Country Code, etc.)
Art.-No	PG		
7421204	10	BluPerformance appliances 60 cm with stainless steel, stainless steel front, Black Steel, GlasBlack	447,1 / 57,2 / 38,4 mm

White base trim



Description

As an alternative to the standard base trim with slots, a white base trim with fine holes can be inserted in BluPerformance appliances. It prevents dust getting onto the appliance and impairing its performance.

Order Info		Models	Misc. Information (Dimension , Country Code, etc.)
Art.-No	PG		
7438694	10	BluPerformance appliances 60 cm in white	447,1 / 57,2 / 38,4 mm

Freezer tray (1/3)



Description

The handy freezer tray allows fruits, berries and herbs to be frozen individually. This prevents them from freezing together and makes it easier to portion and pack them in air-tight fashion later on.

Order Info		Models	Misc. Information (Dimension , Country Code, etc.)
Art.-No	PG		
7422828	14	60cm BluPerformance-Combination and Freezers, BluPerformance-SBS	Width with handle: 412 / Height 40 / Depth 200 mm
7426078	10	70 cm BluPerformance Combination	
7426080	10	As per catalogue	
7426356	10	As per catalogue	

Freezer tray (2/3)



Description

The handy freezer tray allows fruits, berries and herbs to be frozen individually. This prevents them from freezing together and makes it easier to portion and pack them in air-tight fashion later on.

Order Info		Models	Misc. Information (Dimension , Country Code, etc.)
Art.-No	PG		
7430662	11	For Built-in appliances with freezer compartment	

Freezer tray (3/3)



Description

The handy freezer tray allows fruits, berries and herbs to be frozen individually. This prevents them from freezing together and makes it easier to portion and pack them in air-tight fashion later on.

Order Info		Models	Misc. Information (Dimension , Country Code, etc.)
Art.-No	PG		
7431387	12	GT 4921 GT 4932 GT 6122	
7431389	12	As per catalogue	
7431391	12	GTP 3656 GTP 4656	
7431393	12	GTP 3156 GTP 3126	
7431419	10	GTP 2356 GTP 2756	

Door opening limitation



Description

The door opening angle is set to 115° at the plant, but this can be reduced to 90° by installing the door opening limitation into the closing damping. This prevents the door from crashing into walls or neighbouring furnishings and damaging them.

Order Info		Models	Misc. Information (Dimension , Country Code, etc.)
Art.-No	PG		
9096414	11	For all Blue Performance appliances with Soft System	

Lock



Description

In chest freezers, the lock can be easily installed on the housing so that frozen goods can be stored safely.

Order Info		Models	Misc. Information (Dimension , Country Code, etc.)
Art.-No	PG		
9590835	15	Only until Index 20: GT 2122, GT 2132 GT 2632, GT 3032 GT 3622, GT 3632 GT 4232, GT 4932 GT 6122	
9594046		from Index 21: GT 2122, GT 2132 GT 2632, GT 3032 GT 3622, GT 3632 GT 4232, GT 4932 GT 6122	

Lock

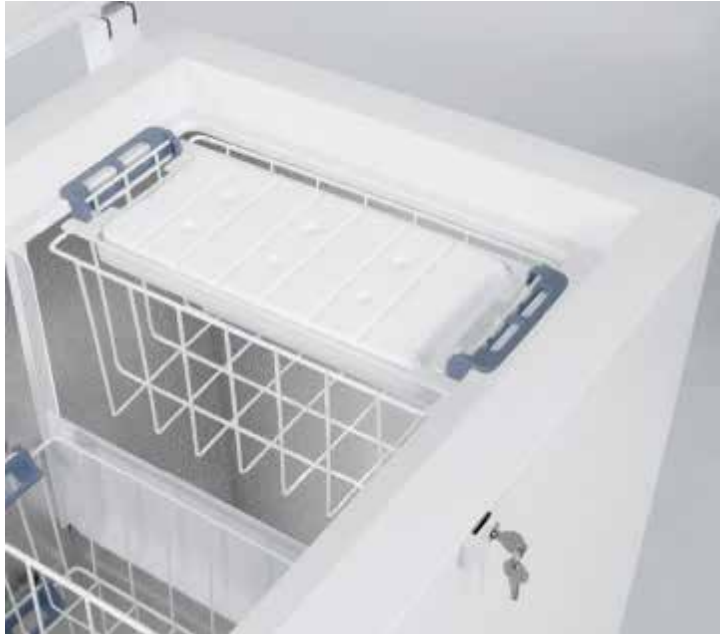


Description

In Vinothek wine cabinets, the lock can be easily installed on the housing in order to prevent unwanted access. In Vinidor and GrandCru free-standing wine cabinets, a lock is integrated in the side of the door as standard.

Order Info		Models	Misc. Information (Dimension , Country Code, etc.)
Art.-No	PG		
9094443	20	WKb 1812, WKb 3212 WKb 4212, WKr 1811 WKr 3211, WKr 4211 WTb 4212, WTr 4211	

Additional basket for chests (1/3)

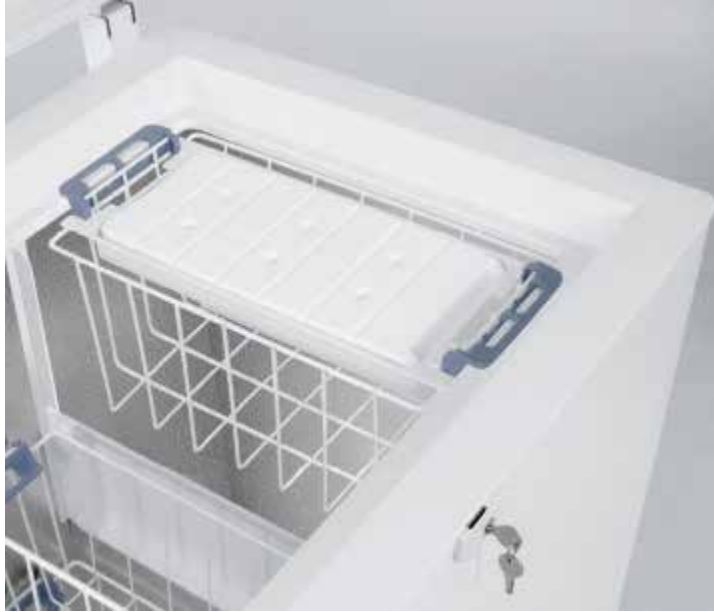


Description

Flexible addition: Additional chest baskets make it easier to sort small frozen goods and enables faster access to the frozen goods.

Order Info		Models	Misc. Information (Dimension , Country Code, etc.)
Art.-No	PG		
7112251	14	GTP 2756	387 / 213 / 142 mm
7112317	15	LGT 2325 GTP 2356	387 / 213 / 142 mm
7112725	15	FT 4205, GT 2122, GT 2132 GT 2632, GT 3032, GT 3622, GTL 3005, GTL 3006	499 / 228 / 210 mm

Additional basket for chests (2/3)

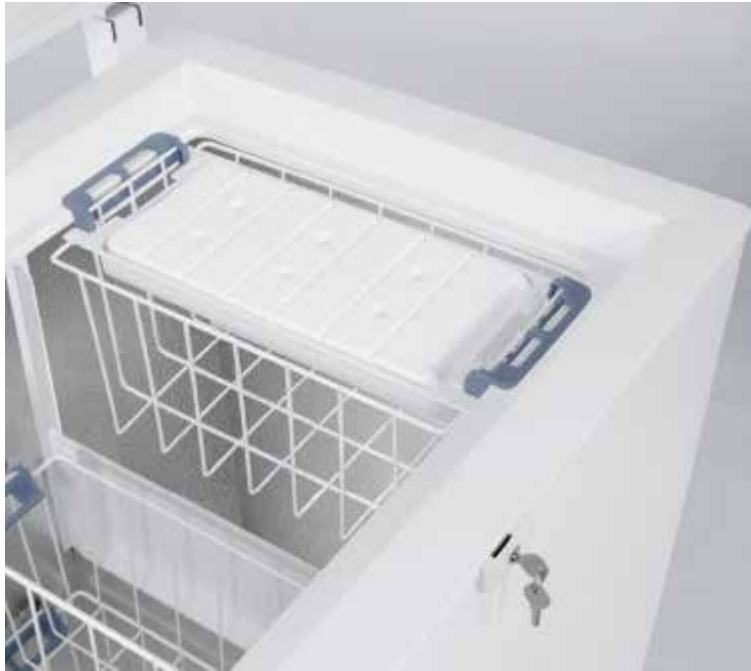


Description

Flexible addition: Additional chest baskets make it easier to sort small frozen goods and enables faster access to the frozen goods.

Order Info		Models	Misc. Information (Dimension , Country Code, etc.)
Art.-No	PG		
7112727	14	GT 4921, GT 6122, GTL 4905 GTL 4906, GTL 6105, GTL 6106	551 / 228 / 210 mm
7112943	15	GTP 3126	432 / 228 / 240 mm
7113553	15	GT 4932	551 / 228 / 142 mm
7113555	15	GTP 3156	432 / 228 / 240 mm

Additional basket for chests (3/3)



Description

Flexible addition: Additional chest baskets make it easier to sort small frozen goods and enables faster access to the frozen goods.

Order Info		Models	Misc. Information (Dimension , Country Code, etc.)
Art.-No	PG		
7113557	15	GT 3632 GT 6122	208 / 228 / 499 mm
7113627	15	GTP 3656, GTP 4656, LGT 3725-42, LGT 4725-42	481 / 228 / 208 mm

Vario energy-saving panel

Sales packaging accessories



Description

If you do not need the entire interior for storage, you can use the Vario energy saving panel to switch off unused drawers in NoFrost freezers. Energy consumption can thereby be reduced by up to 50 % more.

Order Info		Models	Misc. Information (Dimension , Country Code, etc.)
Art.-No	PG		
9881138		70 cm BluPerformance-Freezer	
9881803		60 cm generation Freestanding 2008	462 / 457 / 43 mm
9881804		70 cm generation Freestanding 2008	481 / 492 / 68 mm
9881805		BluPerformance 60 cm	

Vario energy-saving panel



Description

If you do not need the entire interior for storage, you can use the Vario energy saving panel to switch off unused drawers in NoFrost freezers. Energy consumption can thereby be reduced by up to 50 % more.

Order Info		Models	Misc. Information (Dimension , Country Code, etc.)
Art.-No	PG		
9368042	23	70 cm BluPerformance-Freezer	
9363210	23	60 cm generation Freestanding 2008	462 / 457 / 43 mm
9363372	22	70 cm generation Freestanding 2008	481 / 492 / 68 mm
9368032	23	BluPerformance 60 cm	

Ventilation grille



Order Info		Models	Misc. Information (Dimension , Country Code, etc.)
Art.-No	PG		
7427640		EWTdf 1653, EWTdf 2353 EWTdf 3553, EWTgb 1683 EWTgb 2383, EWTgb 3583 EWTgw 1683, EWTgw 2383 EWTgw 3583, ICN 3314 ICN 3324, ICNS 3314 IKS 2314, SICBN 3366 SICN 3314, SICN 3324 SICN 3356, SICN 3366 SICN 3376, SIGN 3576 SIKB 3550	

Description

The robust and decorative ventilation grille contributes to the air circulation behind closed surfaces. Ideal for side-by-side devices positioned in niches.



Ventilation grille



Order Info		Models	Misc. Information (Dimension , Country Code, etc.)
Art.-No	PG		
9900368		SBS 26S1, SBSef 7242, SBSef 7343, SBSes 7155, SBSes 7165, SBSes 7252 SBSes 7253, SBSes 7353, SBSes 8063 SBSes 8473, SBSes 8486, SBSes 8663 SBSes 9063, SBSesf 7212	

Description

The robust and decorative ventilation grille contributes to the air circulation behind closed surfaces. Ideal for side-by-side devices positioned in niches.



Ventilation grille



Order Info		Models	Misc. Information (Dimension , Country Code, etc.)
Art.-No	PG		
9900199		CNes 6256 CBNes 6256	910 x 15 x 100 mm (35-13 /16" x19 /32,, x3-15/16" inch)

Description

The robust and decorative ventilation grille contributes to the air circulation behind closed surfaces. Ideal for upright devices positioned in niches.



Ventilation grille



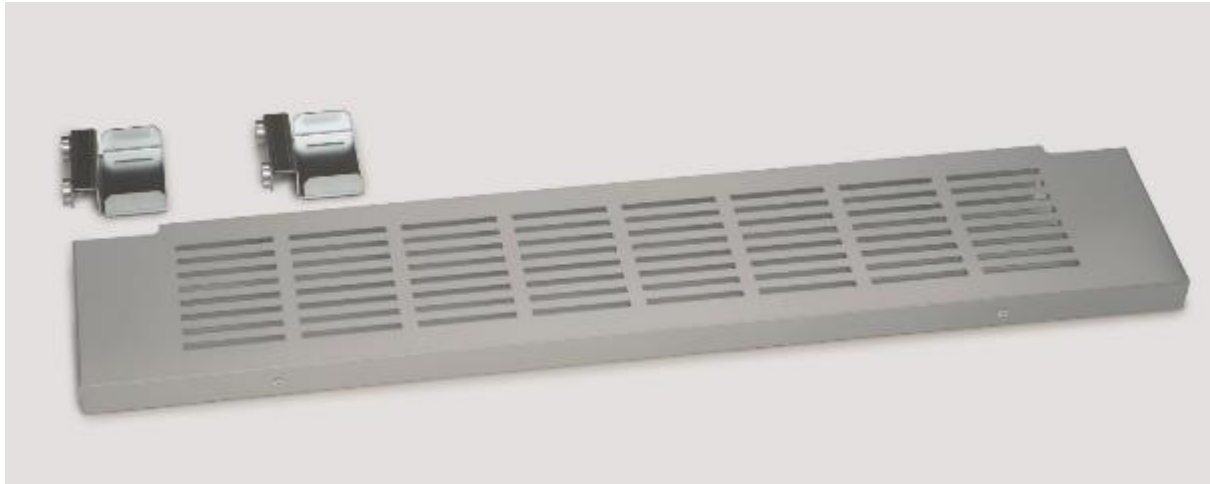
Order Info		Models	Misc. Information (Dimension , Country Code, etc.)
Art.-No	PG		
9900277		CNes 6156	910 x 15 x 100 mm (35-13 /16" x19 /32,, x3-15/16" inch)

Description

The robust and decorative ventilation grille contributes to the air circulation behind closed surfaces. Ideal for upright devices positioned in niches.



Ventilation grille



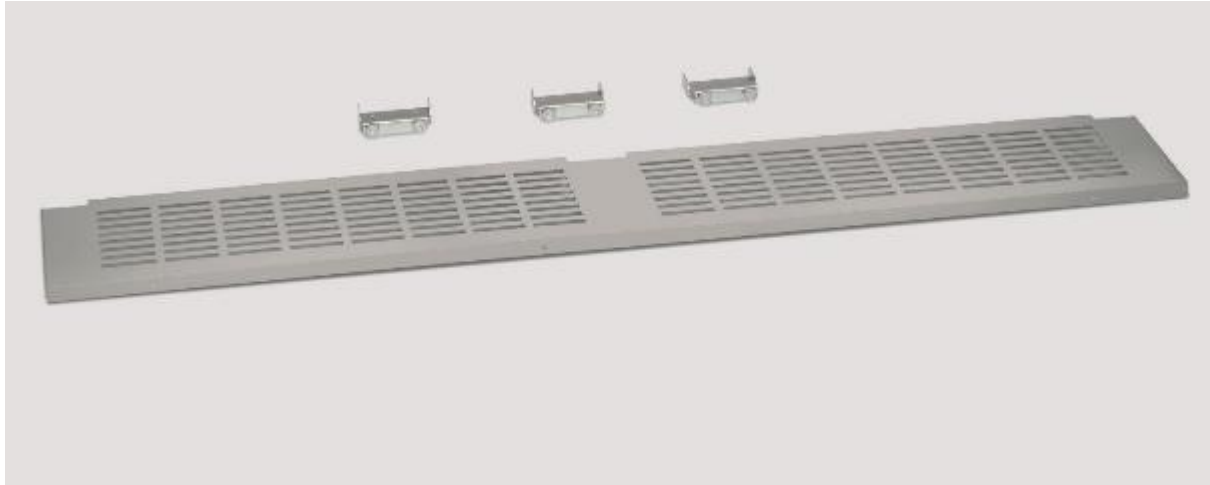
Description

The robust and decorative ventilation grille contributes to the air circulation behind closed surfaces. Ideal for upright devices positioned in niches.



Order Info		Models	Misc. Information (Dimension , Country Code, etc.)
Art.-No	PG		
9901523		CNPef 4406 CNPef 4416 CNPef 4436 CNPef 4516 CNPef 5026 CBNPes 5066	

Ventilation grille



Order Info		Models	Misc. Information (Dimension , Country Code, etc.)
Art.-No	PG		
9901521		SBSes 9063	

Description

The robust and decorative ventilation grille contributes to the air circulation behind closed surfaces. Ideal for side-by-side devices positioned in niches.



Side-by-Side Kit

NEW



Description

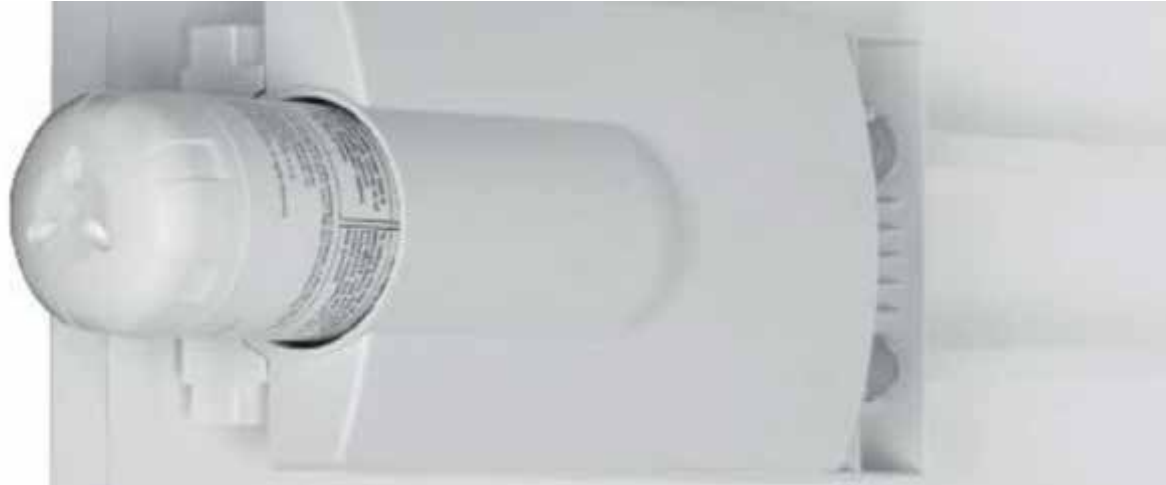
With the new SBS kits, two appliances can be connected to form a visually appealing unit.

The gap between the appliances is maintained and the gap is covered flush with the surface by means of a cover strip.

Order Info		Models	Misc. Information (Dimension , Country Code, etc.)
Art.-No	PG		
9902702		SGNPef 4315	Stainless steel
9902577		SGNP 4315	White



Water filter retrofit kit

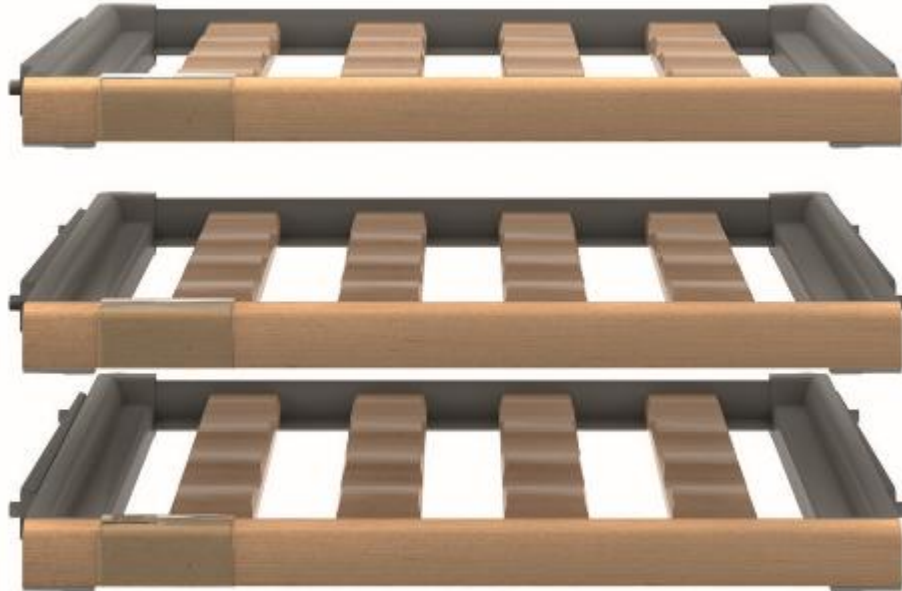


Description

Filtered water for pure enjoyment! The water filter reduces deposits, rust, and the taste and smell of chlorine. This means that there is always a supply of fresh water and ice for cold drinks – and always in top quality. The water filter should be replaced every 6 months at the latest.

Order Info		Models	Misc. Information (Dimension , Country Code, etc.)
Art.-No	PG		
9096034		CBNPes 4046 137, CBNPes 4066 137, CBNPes 5066 137, CBNPes 5066 213, CBNPes 5066 237 CNPef 4036 191, CNPef 4036 137 CNPef 4436 237, CNPef 4436 137 CNPef 5036 191, SIGN 3576 237 SIGN 3576 213, SIGN 3576 191 SBSes 8063, SBSes 8064, SBSes 9063	

Wooden bottle shelf set



Description

The bottle shelf set consists of three wooden shelves and is available as an accessory for the MyStyle appliance Kcu 701

Order Info		Models	Misc. Information (Dimension , Country Code, etc.)
Art.-No	PG		
9096199		Kcu 701 Kcuno 701 Kcukw 701 Kcufb 701	

Glass storage shelf set

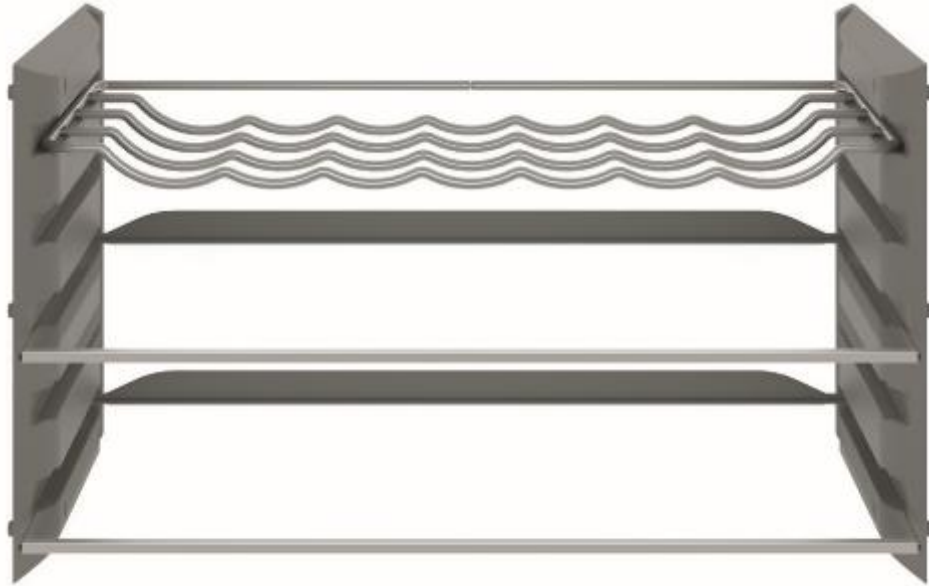


Description

The glass storage shelf set consists of three glass storage shelves and is available as an accessory for the MyStyle appliance Kcu 701

Order Info		Models	Misc. Information (Dimension , Country Code, etc.)
Art.-No	PG		
9096201		Kcu 701 Kcuno 701 Kcukw 701 Kcufb 701	

Stainless steel/glass storage shelf set

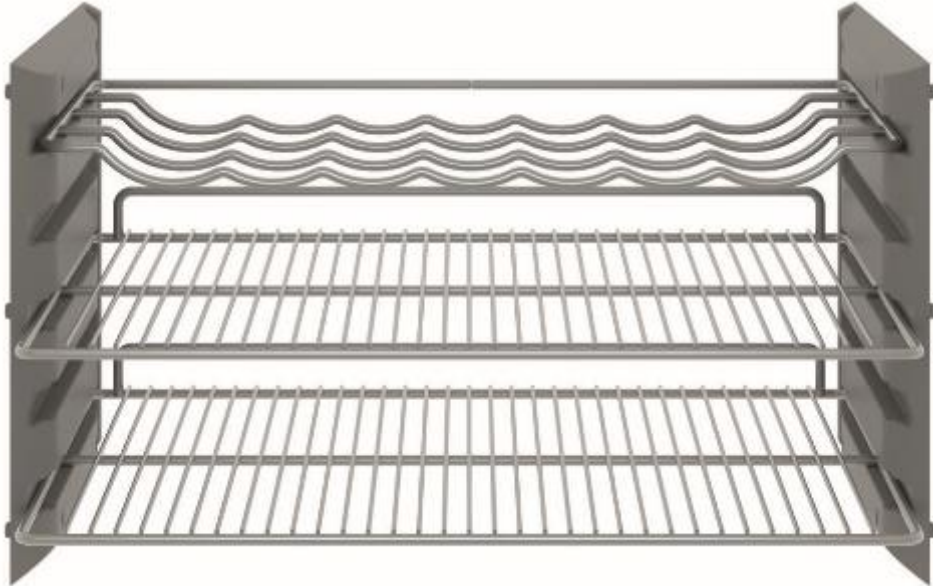


Description

The storage shelf set consists of two storage shelves made out of safety glass and a stainless steel bottle shelf and is available as an accessory for the MyStyle appliance Kcu 701

Order Info		Models	Misc. Information (Dimension , Country Code, etc.)
Art.-No	PG		
9096203		Kcu 701 Kcuno 701 Kcukw 701 Kcufb 701	

Stainless steel storage shelf set



Description

The storage shelf set consists of two storage shelves and a bottle shelf made out of stainless steel and is available as an accessory for the MyStyle appliance Kcu 701

Order Info		Models	Misc. Information (Dimension , Country Code, etc.)
Art.-No	PG		
9096205		Kcu 701 Kcuno 701 Kcukw 701 Kcufb 701	

Glass shelf



Description

Additional shelf area in the fridge.

Cancelled as accessory

Order Info		Models	Misc. Information (Dimension , Country Code, etc.)
Art.-No	PG		
7276003		Kcu 701 023 Kcu 701	
7276005		Kcu 701 023 Kcu 701	

Plastic drawer with glass plate



Description

Adds shelf area in the fridge.

Cancelled as accessory

Order Info		Models	Misc. Information (Dimension , Country Code, etc.)
Art.-No	PG		
9096845		Kcu 701 023 Kcu 701	

Wooden drawer



Description
Drawer for the fridge.

Cancelled as accessory

Order Info		Models	Misc. Information (Dimension , Country Code, etc.)
Art.-No	PG		
7112528		Kcu 701 023 Kcu 701	

Wooden shelf



Description

Wooden shelf for the fridge. For the safe and clear storage of Bordeaux bottles.

Cancelled as accessory

Order Info		Models	Misc. Information (Dimension , Country Code, etc.)
Art.-No	PG		
7112530		Kcu 701 023 Kcu 701	



Built-in related accessories

Bottle basket



Description

Thanks to adjustable holders, the convenient bottle basket offers a secure hold for bottles and beverage packs. When taken out the handle ensures safe transport. The bottle case is suitable for the pull-out unit of UIKo 1550 and UIKo 1560.

Order Info		Models	Misc. Information (Dimension , Country Code, etc.)
Art.-No	PG		
7413588	16	UIKo 1550, UIKo 1560	

Covers for screw holes



Description

These covers can be used to seal the holes in custom panels left behind when a sliding door appliance is replaced with a fixed-door appliance.

Order Info		Models	Misc. Information (Dimension , Country Code, etc.)
Art.-No	PG		
9086484	09	For all built-in appliances (especially for door-on- door-models)	

Adjustable feet



Description

The height-adjustable feet allow Liebherr built-in appliances to be aligned perfectly at their set-up location, ensuring optimum closing behaviour of the door and ensuring that appliances remain functional. The adjustable feet are available for all built-in appliances for niche of 72 cm, 88 cm, 102 cm and 122 cm. For all other appliances they are already included in the scope of delivery.

Order Info		Models	Misc. Information (Dimension , Country Code, etc.)
Art.-No	PG		
9096294	10	For all Built-in appliances, niche: 72, 88, 102 and 122 cm (for all additional appliances already included in scope of delivery)	

Stainless steel panels



Description

As an alternative to traditional custom panels, stainless steel custom panels with bar handles for 88, 122 and 178 cm niches can be used to create visual highlights in the kitchen.

Not provided with the panels but separately orderable is the matching stainless steel cleaner. It removes fingerprints, streaks and stains from the panel quickly, reliably and without streaks.

Order Info		Models	Misc. Information (Dimension , Country Code, etc.)
Art.-No	PG		
9901990		For 1-door Built-in appliances, niche: 88 cm (BI fridges, freezers and wine)	906mm x 595mm x 19mm
9901996		For 1-door Built-in appliances, niche: 122 cm (BI fridges, freezers and wine)	1233mm x 595mm x 19mm
9902007		For 1-door Built-in appliances, niche: 178 cm (BI fridges, freezers and wine)	1816mm x 595mm x 19mm

NEW

Stainless steel panel with vertical handle

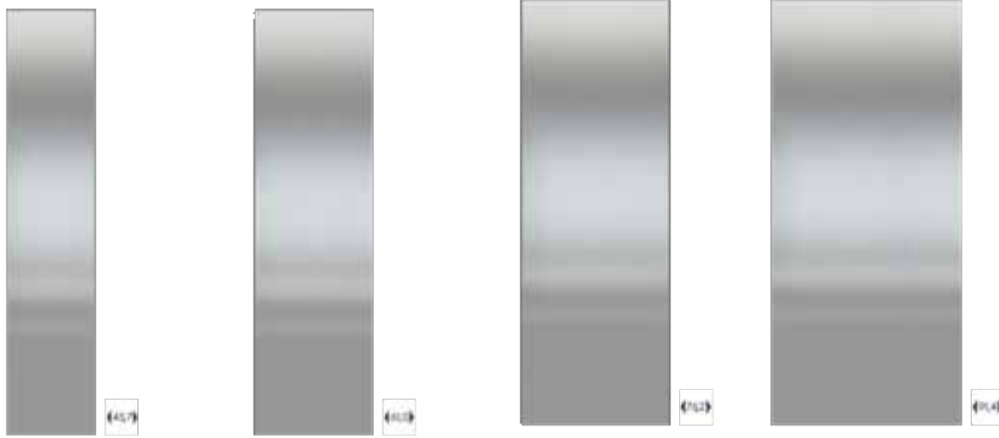


Description

Creates a visual highlight and is easy to clean.

Order Info		Models	Misc. Information (Dimension , Country Code, etc.)
Art.-No	PG		
9902830		SUIB 1550 237, SUIK 1510 136 SUIKP 1550 137, SUIG 1514 136 SUIGN 1554 237	Stainless steel panel with vertical handle
9902833		SUIKo 1550 136 SUIKo 1560 337	Stainless steel panel with horizontal handle

Stainless steel panels Monolith



Description

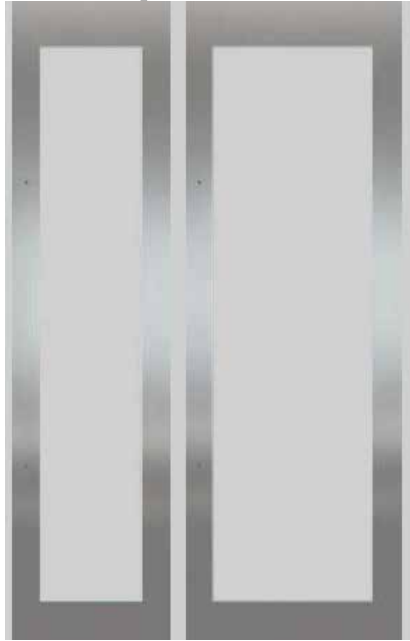
As an alternative to traditional custom panels, stainless steel custom panels can be used to create visual highlights.

Not provided with the panels but separately orderable is the matching stainless steel cleaner. It removes fingerprints, streaks and stains from the panel quickly, reliably and without streaks.

Order Info		Models	Misc. Information (Dimension , Country Code, etc.)
Art.-No	PG		
9901916		EGN 9171	18" (45.7cm)
9901883		EGN 9271 EKB 9271	24" (61.0cm)
9901872		EKB 9471 EGN 9471	30" (76.2cm)
9901458		EKB 9671 EGN 9671	36" (91.4cm)



Stainless steel panels Monolith wine



Description

As an alternative to the conventional furniture front, the stainless steel furniture front can be used to set visual accents. With the help of the matching stainless steel cleaner, fingerprints, stains and streaks can be removed from the front quickly, reliably and without streaks.

Order Info		Models	Misc. Information (Dimension , Country Code, etc.)
Art.-No	PG		
9901535		EWT 9175	18" (45.7cm) Successor of aH SSF 982104700
9901533		EWT 9275	24" (61.0cm) Successor of aH SSF 982104500

Stainless steel panel for under-worktop appliances




without handle
 → Suitable handle
 (see image) 9901527

Description

As an alternative to conventional furniture front, the stainless steel custom panels for undercounter appliances can be used to create visual highlights. Not provided with the panel but separately orderable is the matching stainless steel cleaner. It removes fingerprints, streaks and stains from the panel quickly, reliably and without streaks.

The panel is without handle and without handle holes and thus allows an individual use.

Dimensions based on US Standard.

Order Info		Models	Misc. Information (Dimension , Country Code, etc.)
Art.-No	PG		
9900432		UIK 1550, SUIB 1550 237, SUIKP 1550 137, SUIKo 1560 337, SUIGN 1554 237	Height: 755,5 mm Width: 603,0 mm Thickness: 19.5 mm Grain: Horizontal  7088 008-00 Installation instruction

Base trim



Description

In order to prevent dirt from being trapped under the appliance, and in order to create an appealing overall appearance for under-worktop appliances, this easy-to-fit base trim can be used to cover the lower area of the appliance.

Order Info		Models		Misc. Information (Dimension , Country Code, etc.)
Art.-No	PG			
9900436		UIK 1550 SUIB 1550 237 SUIKP 1550 137 SUIKo 1560 337 SUIGN 1554 237 SUIK 1510 SUIG 1514 SUIKo 1550 SUIKo 1560 337	UIKo 1550 UIKo 1550 UIKo 1560 UIKP 1550 UIKP 1554	

Assembly kit for attachment on the side

Picture will be given later

Description

The assembly kit can be used to position two under-worktop appliances next to each other in order to create a side-by-side appliance.

Order Info		Models	Misc. Information (Dimension , Country Code, etc.)
Art.-No	PG		
9096126		UIG 1313 UIG 1323 UIK 1424 UIK 1610 UIK 1620	Undercounter appliances
9096228		UIK 1550	

Base trim



Order Info		Models	Misc. Information (Dimension , Country Code, etc.)
Art.-No	PG		
9901493		EGN 9171	18" (45.7cm)
9901496		EGN 9271 EKB 9271	24" (61.0cm)
9901530		EKB 9471 EGN 9471	30" (76.2cm)
9902349		EKB 9671 EGN 9671 EGN 9171	36" (91.4cm)
9901552		EGN 9171 EGN 9271 EKB 9271	42" (106.7cm)
9901765		EGN 9271 EGN 9171 EKB 9271 EKB 9471	48" (121.9cm)
9901787		EKB 9471 EKB 9671 EGN 9271 EGN 9171 EKB 9271 EGN 9471	54" (137.1cm)

Description

The 18", 24", 30", 36", 42", 48" and 54" stainless steel base trims are easy to install, prevents trapped dirt under the appliance and creates an appealing overall appearance.



Base trim



Description

The 60", 65" and 72" stainless steel base trims are easy to install, prevents trapped dirt under the appliance and creates an appealing overall appearance.

Order Info		Models		Misc. Information (Dimension , Country Code, etc.)
Art.-No	PG			
9902366		EKB 9671 EGN 9671 EKB 9471 EGN 9271 EKB 9271	EGN 9171 EGN 9471	60" (152.4cm)
9902819		EKB 9671 EGN 9671 EKB 9471 EGN 9271 EKB 9271	EGN 9171 EGN 9471	65" (167.6cm)
9902390		EKB 9671 EKB 9471 EGN 9671 EGN 9471 EGN 9171	EGN 9271 EKB 9271	72" (182.8cm)



Base trim

Picture will be given later

Description

Prevents trapped dirt under the appliance.

Order Info		Models	Misc. Information (Dimension , Country Code, etc.)
Art.-No	PG		
9902417		UKes 1762 137 20 UWKes 1762 137 20 UWTes 1672 137 20 UWTes 1672 213 20	
9902418		UWT 1682 137 20 UWT 1682 213 20	
9902819		ECBN 9271, ECBN 9471 ECBN 9671, ECBN 9673 EGN 9171, EGN 9271 EGN 9471, EGN 9671 EKB 9271, EKB 9471 EKB 9671, EWT 9175 EWT 9275	Base panel 66"

Stainless steel handle 14"

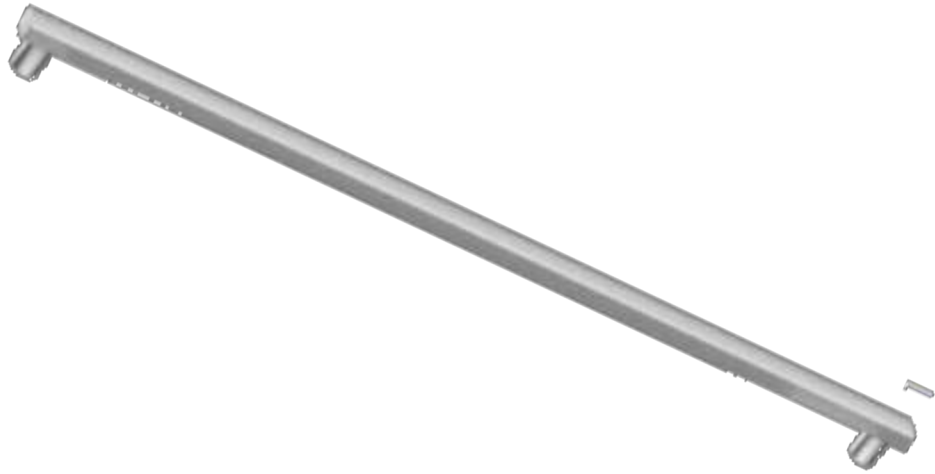


Description

The robust stainless steel handle is suitable for under-worktop stainless steel panels and ensures a harmonious design.

Order Info		Models	Misc. Information (Dimension , Country Code, etc.)
Art.-No	PG		
9901527		UIK 1550 SUIB 1550 237 SUIKP 1550 137 SUIKo 1560 337 SUIGN 1554 237	

Aluminium handle



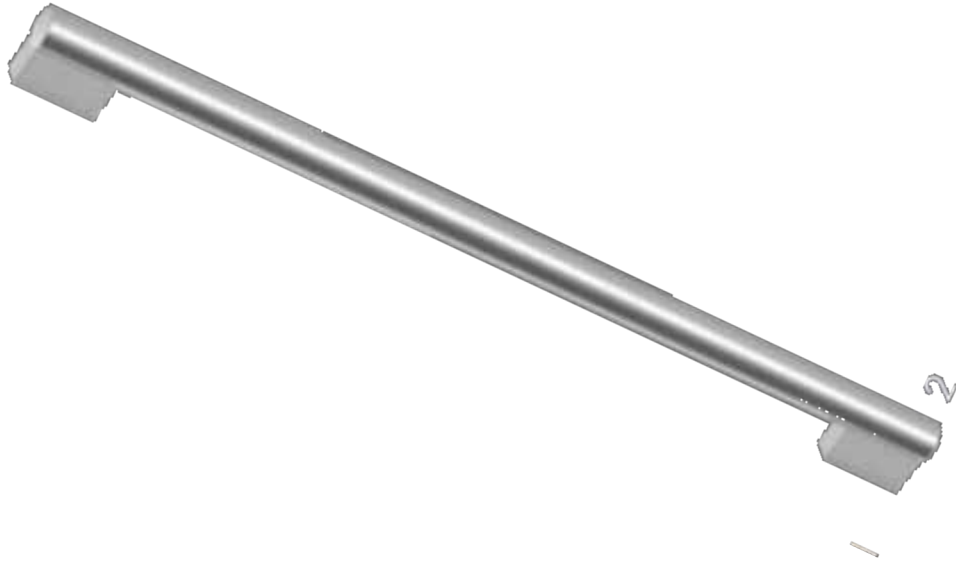
Description

The elegant, robust flat brushed aluminium handle with distinctive edges is pleasant to grip and can be attached to stainless steel panels.

Order Info		Models	Misc. Information (Dimension , Country Code, etc.)
Art.-No	PG		
9901461		EGN 9171 EGN 9271 EKB 9271 EKB 9471	Aluminium handle with distinctive edges



Stainless steel handle



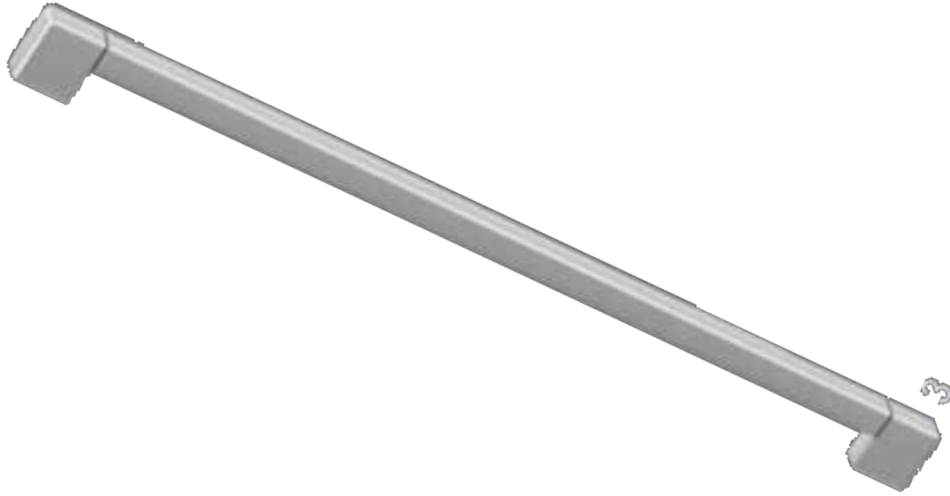
Description

The elegant, rounded stainless steel handle is pleasant to grip and can be attached to stainless steel panels.

Order Info		Models	Misc. Information (Dimension , Country Code, etc.)
Art.-No	PG		
9901489		EGN 9171 EGN 9271 EKB 9271 EKB 9471	



Aluminium handle



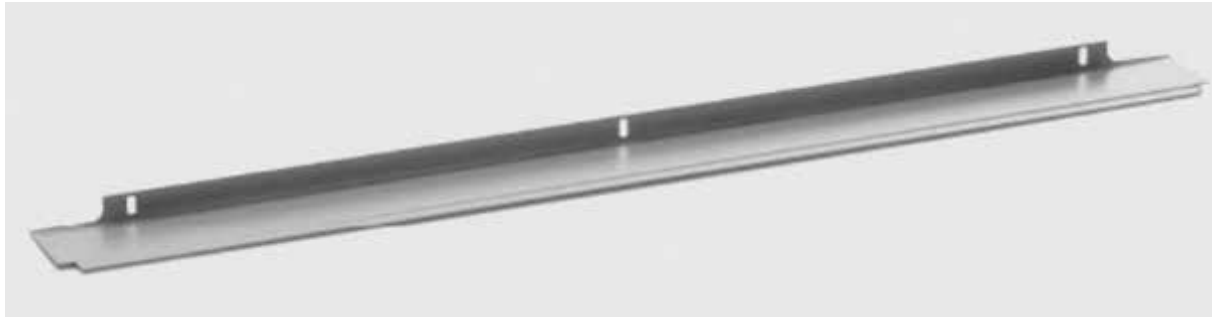
Description

The elegant, robust square brushed aluminium handle with a soft edge is pleasant to grip and can be attached to stainless steel panels.

Order Info		Models	Misc. Information (Dimension , Country Code, etc.)
Art.-No	PG		
9901492		EGN 9171 EGN 9271 EKB 9271 EKB 9471	



Equaliser trims aluminium coloured (16/ 41/ 60 mm)



Description

If the decor panel in a panel ready built-in appliance is not high enough, this can be compensated with the equaliser trim.



Order Info		Models	Misc. Information (Dimension , Country Code, etc.)
Art.-No	PG		
9733050	14	EG 1624, EK 1620, EK 1624, EK 2320, EK 2324	Dimension mm (H) 16
9733051	15	EG 1624, EK 1620, EK 1624, EK 2320, EK 2324	Dimension mm (H) 41
9733052	16	EG 1624, EK 1620, EK 1624, EK 2320, EK 2324	Dimension mm (H) 60

Equaliser trims brown (16/ 41/ 60 mm)



Description

If the decor panel in a panel ready built-in appliance is not high enough, this can be compensated with the equaliser trim.



Order Info		Models	Misc. Information (Dimension , Country Code, etc.)
Art.-No	PG		
9733032	14	EG 1624, EK 1620, EK 1624, EK 2320, EK 2324	Dimension mm (H) 16
9733033	15	EG 1624, EK 1620, EK 1624, EK 2320, EK 2324	Dimension mm (H) 41
9733034	16	EG 1624, EK 1620, EK 1624, EK 2320, EK 2324	Dimension mm (H) 60

Equaliser trims white (16/ 41/ 60 mm)



Description

If the decor panel in a panel ready built-in appliance is not high enough, this can be compensated with the equaliser trim.



Order Info		Models	Misc. Information (Dimension , Country Code, etc.)
Art.-No	PG		
9733035	14	EG 1624, EK 1620, EK 1624, EK 2320, EK 2324	Dimension mm (H) 16
9733036	15	EG 1624, EK 1620, EK 1624, EK 2320, EK 2324	Dimension mm (H) 41
9733037	15	EG 1624, EK 1620, EK 1624, EK 2320, EK 2324	Dimension mm (H) 60

Decor frame brown



Description

In panel ready built-in appliances, the aluminium frame fitted as standard can be adapted by means of the brown decor frame.

Order Info		Models	Misc. Information (Dimension , Country Code, etc.)
Art.-No	PG		
9911410	18	EG 1624 EK 1620 EK 1624 EK 2320 EK 2324	

Decor frame white



Description

In panel ready built-in appliances, the aluminium frame fitted as standard can be adapted by means of the white decor frame.

Order Info		Models	Misc. Information (Dimension , Country Code, etc.)
Art.-No	PG		
9911412	18	EG 1624 EK 1620 EK 1624 EK 2320 EK 2324	

Equaliser trim brown 1/6



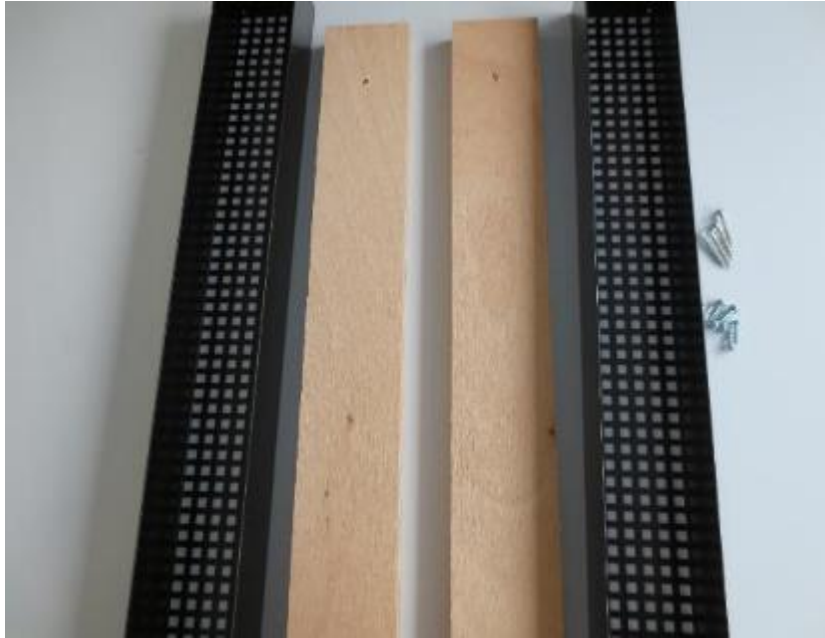
Description

If the decor panel in a panel ready built-in appliance is not high enough, this can be compensated with the equaliser trim.

Order Info		Models	Misc. Information (Dimension , Country Code, etc.)
Art.-No	PG		
9086203	26	For all SMS-appliances	Brown 1/6



Equaliser trim black/white 1/6



Description

If the decor panel in a panel ready built-in appliance is not high enough, this can be compensated with the equaliser trim.

Order Info		Models	Misc. Information (Dimension , Country Code, etc.)
Art.-No	PG		
9086201	26	For all SMS-appliances	Black 1/6
9086205	26	For all SMS-appliances	White 1/6



Decor frame brown 10/6



Description

In panel ready SMS built-in appliances, the white frame fitted as standard can be adapted by means of the brown decor frame.

Order Info		Models	Misc. Information (Dimension , Country Code, etc.)
Art.-No	PG		
9911533	26	EKPc 2554	
9911537	26	EKc 2514	



Decor frame brown 12/6 combi



Description

In panel ready SMS built-in appliances, the white frame fitted as standard can be adapted by means of the brown decor frame.

Order Info		Models	Misc. Information (Dimension , Country Code, etc.)
Art.-No	PG		
9911527	31	ECc 2866	



Decor frame brown 12/6



Description

In ready SMS built-in appliances, the white frame fitted as standard can be adapted by means of the brown decor frame.

Order Info		Models	Misc. Information (Dimension , Country Code, etc.)
Art.-No	PG		
9911529	26	EKFPc 2854	



Decor frame brown 6/6



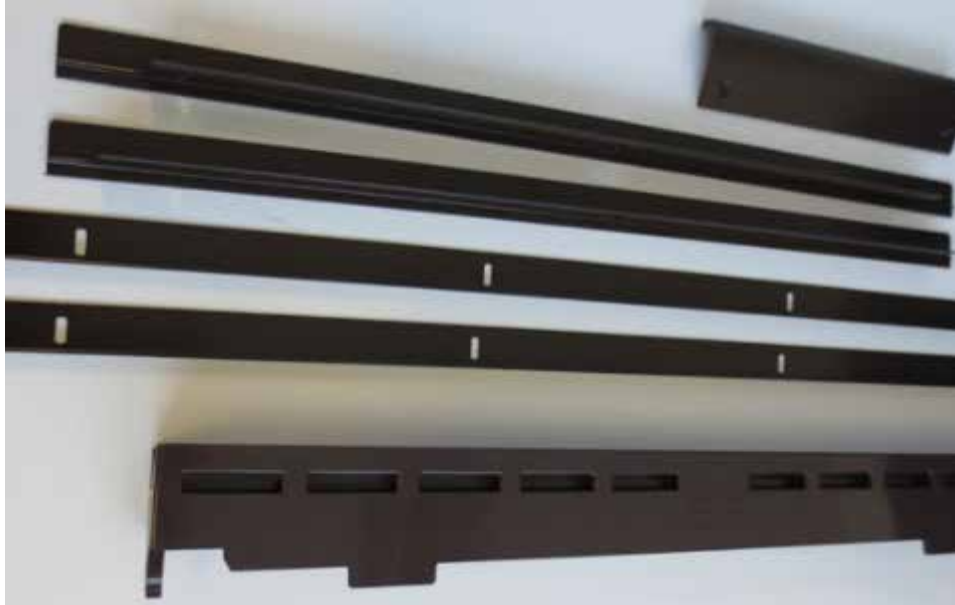
Description

In panel ready SMS built-in appliances, the white frame fitted as standard can be adapted by means of the brown decor frame.

Order Info		Models	Misc. Information (Dimension , Country Code, etc.)
Art.-No	PG		
9911543	25	Ekc 1424	



Decor frame brown 7/6



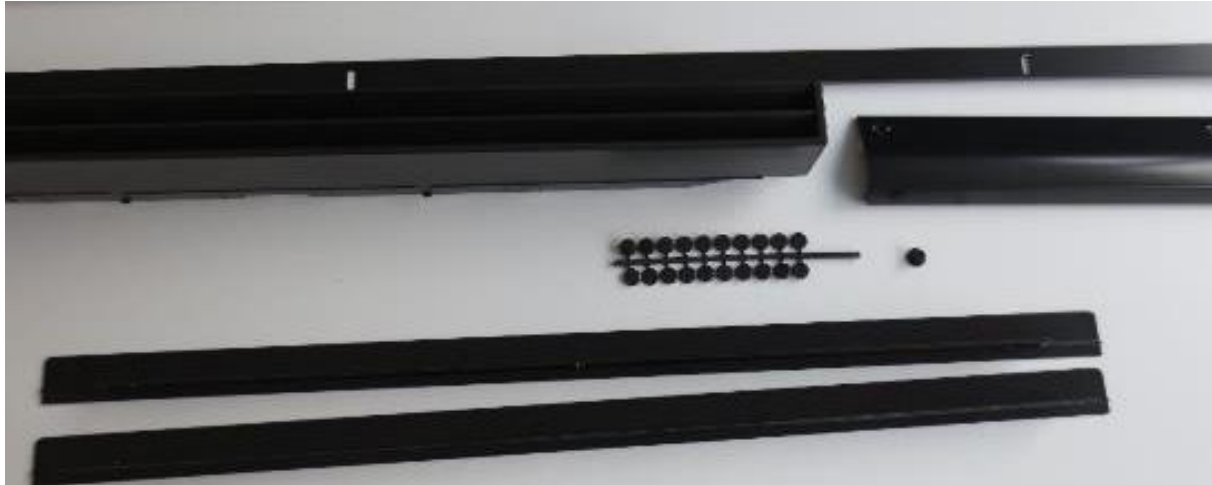
Description

In panel ready SMS built-in appliances, the white frame fitted as standard can be adapted by means of the brown decor frame.

Order Info		Models	Misc. Information (Dimension , Country Code, etc.)
Art.-No	PG		
9911539	25	Ekc 1714	



Decor frame black 10/6



Description

In panel ready SMS built-in appliances, the white frame fitted as standard can be adapted by means of the black decor frame.

Order Info		Models	Misc. Information (Dimension , Country Code, etc.)
Art.-No	PG		
9911531	26	EKPc 2554	
9911535	26	EKc 2514	



Decor frame black 12/6 combi



Description

In panel ready SMS built-in appliances, the white frame fitted as standard can be adapted by means of the black decor frame.

Order Info		Models	Misc. Information (Dimension , Country Code, etc.)
Art.-No	PG		
9911525	31	ECc 2866	



Decor frame black 6/6



Description

In panel ready SMS built-in appliances, the white frame fitted as standard can be adapted by means of the black decor frame.

Order Info		Models	Misc. Information (Dimension , Country Code, etc.)
Art.-No	PG		
9911541	25	EKc 1424	

Door opening limitation



Description

The door opening angle is set to 115° at the plant, but this can be reduced to 90° by simply inserting the stable pin in the hinge. This prevents the door from crashing into walls or neighbouring furnishings and damaging them.

Order Info		Models	Misc. Information (Dimension , Country Code, etc.)
Art.-No	PG		
9096212	10	All 1-door Built-in appliances from 140cm niche	

Door opening limitation



Description

The door opening angle is set to 115° at the plant, but this can be reduced to 90° by simply inserting the stable pin in the hinge. This prevents the door from crashing into walls or neighbouring furnishings and damaging them.

Order Info		Models	Misc. Information (Dimension , Country Code, etc.)
Art.-No	PG		
9096214	10	All built-in appliances except for 1-door built-in models larger than 140 cm niche + ECN 6256, ECBN 6256	

SoftSystem for appliances with door-slider-installation



Description

The SoftSystem is available as an accessory for door-slider appliances and contributes towards perfect operating convenience. It closes doors very gently and quietly. Please note: Once an appliance has been installed, it requires great cost and effort to install closing damping retroactively. A minimum furniture depth of 560 mm is required so that SoftSystem can be installed correctly. For combined appliances, separate SoftSystem is required for every door.

Order Info		Models	Misc. Information (Dimension , Country Code, etc.)
Art.-No	PG		
9096494	21	ICBS, ICNS, ICS, ICTS, ICUNS, ICUS, IGS, IKS	

SoftSystem for appliances with door-on-door system



Description

The SoftSystem is a convenient feature that has proven itself in everyday use. The SoftSystem integrated in the door damps the movement when the door is closed and ensures particularly soft closing even when the door interior is fully loaded. On built-in appliances the door closes automatically from an opening angle of around 30°. With its elegant white colour, the closing damping system matches the door interior in visual terms.

Order Info		Models	Misc. Information (Dimension , Country Code, etc.)
Art.-No	PG		
9096157	21	Comfort models with door-on-door system	Not suitable for IKV 3224

Grid shelf



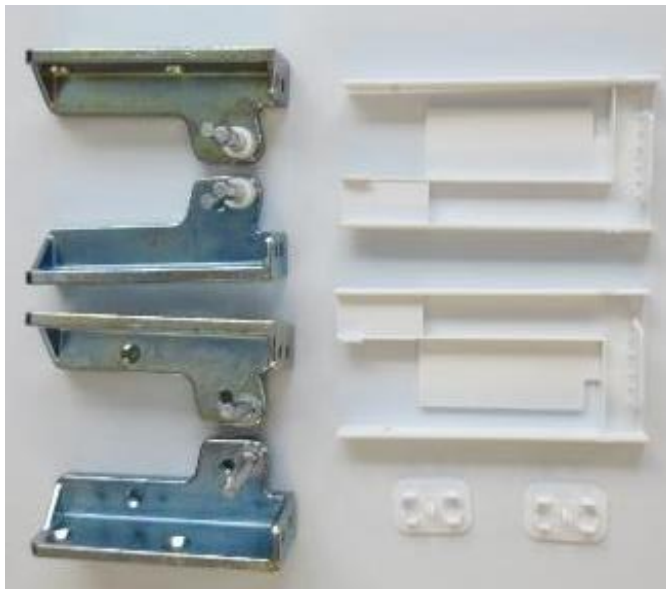
Description

The grid shelf is a convenient way to split the 4-star freezer compartment into two areas. This allows food to be stored simply and tidily.

Order Info		Models	Misc. Information (Dimension , Country Code, etc.)
Art.-No	PG		
7112223	14	as per catalogue	400 / 130 / 260 mm



Set of replacement door hinges



Description

This set makes it possible to replace the door hinge. This allows the appliance to be used perfectly in its location and makes goods easy to access.

Order Info		Models	Misc. Information (Dimension , Country Code, etc.)
Art.-No	PG		
9086191	22	EKc 1424 EKc 1714 EKc 2514	

Connecting set for split custom panels



Description

This connecting set is a practical addition when a single-door built-in appliance is installed in an alcove that previously contained a combination. The connecting set is used to connect the previously split panels.

Order Info		Models	Misc. Information (Dimension , Country Code, etc.)
Art.-No	PG		
9086398	13	For one door built-in appliances	

Stainless steel panels for fridge and freezer compartment



Description

As an alternative to traditional custom panels, stainless steel panels can be used to create visual highlights. The matching stainless steel cleaner removes fingerprints, streaks and stains from the panel quickly, reliably and without streaks.



Order Info		Models	Misc. Information (Dimension , Country Code, etc.)
Art.-No	PG		
9900287		ECN 5026 ECBN 5066	niche 203 cm, 80"
9900285		ECN 5026 ECBN 5066	niche 213 cm, 84"

Stainless steel panels for freezer compartment



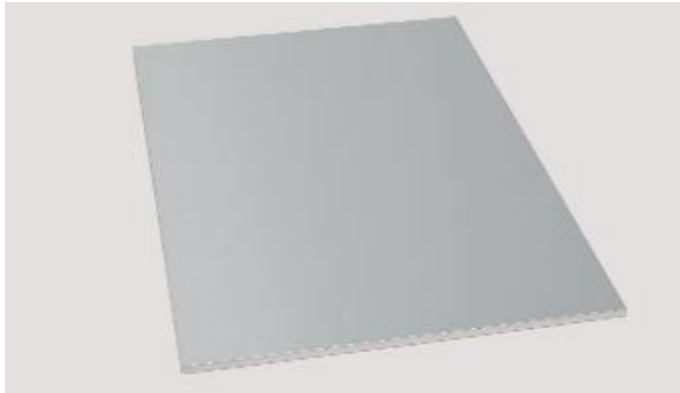
Description

As an alternative to traditional custom panels, stainless steel panels can be used to create visual highlights. The matching stainless steel cleaner removes fingerprints, streaks and stains from the panel quickly, reliably and without streaks.

Order Info		Models	Misc. Information (Dimension , Country Code, etc.)
Art.-No	PG		
9900283		ECN 5026 ECBN 5066	



Stainless steel panels for fridge compartment



Description

As an alternative to traditional custom panels, stainless steel panels can be used to create visual highlights. The matching stainless steel cleaner removes fingerprints, streaks and stains from the panel quickly, reliably and without streaks.



Order Info		Models	Misc. Information (Dimension , Country Code, etc.)
Art.-No	PG		
9900333		ECN 6156 ECBN 6156	niche 203 cm, 80"
9900331		ECN 6156 ECBN 6156	niche 213 cm, 84"

Stainless steel panels for fridge compartment



Description

As an alternative to traditional custom panels, stainless steel panels can be used to create visual highlights. The matching stainless steel cleaner removes fingerprints, streaks and stains from the panel quickly, reliably and without streaks.

Order Info		Models	Misc. Information (Dimension , Country Code, etc.)
Art.-No	PG		
9900323		ECN 6256 ECN 6156 ECBN 6156 ECBN 6256	

Stainless steel panels for fridge compartment



Description

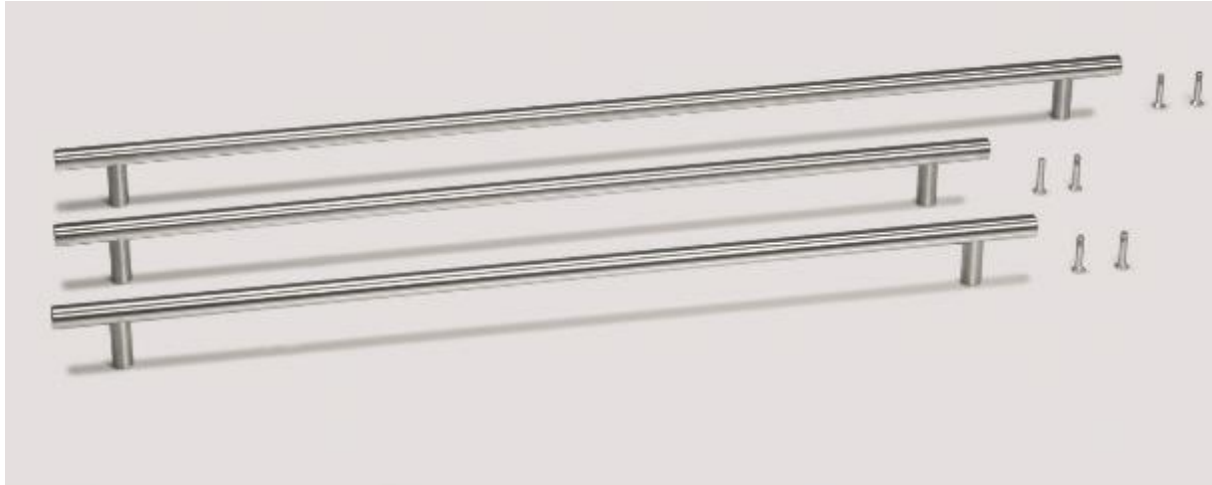
As an alternative to traditional custom panels, stainless steel panels can be used to create visual highlights. The matching stainless steel cleaner removes fingerprints, streaks and stains from the panel quickly, reliably and without streaks.

Order Info		Models	Misc. Information (Dimension , Country Code, etc.)
Art.-No	PG		
9900337		ECN 6256 ECBN 6256	niche 203 cm, 80"
9900335		ECN 6256 ECBN 6256	niche 213 cm, 84"

Please note:

For installing stainless steel panels for ECBN/ECN 6256 you need the Door stoop pins 90° Frenchdoor (art.no. 9096214)

Set of stainless steel handles (3 pieces)



Description

This set comprises three robust stainless steel handles suitable for stainless steel panels.



Order Info		Models	Misc. Information (Dimension , Country Code, etc.)
Art.-No	PG		
9900279		ECN 5026 ECN 5036 ECBN 5066 SBS 95E3	3 pcs.

Set of stainless steel handles (4 pieces)



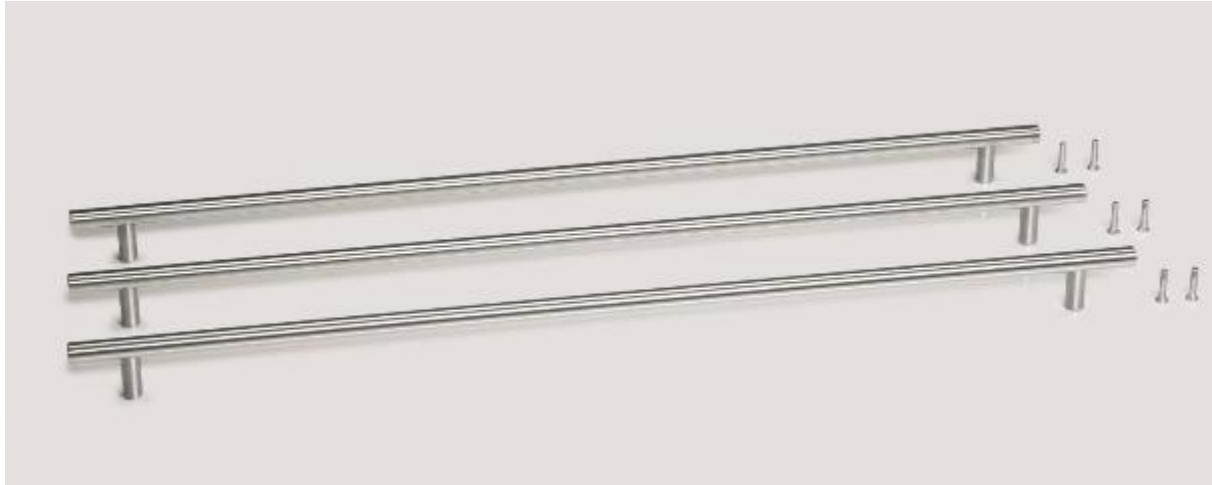
Description

This set comprises four robust stainless steel handles suitable for stainless steel panels.



Order Info		Models	Misc. Information (Dimension , Country Code, etc.)
Art.-No	PG		
9900339		ECBN 6256 ECN 6256	4 pcs

Set of stainless steel handles (3 pieces)

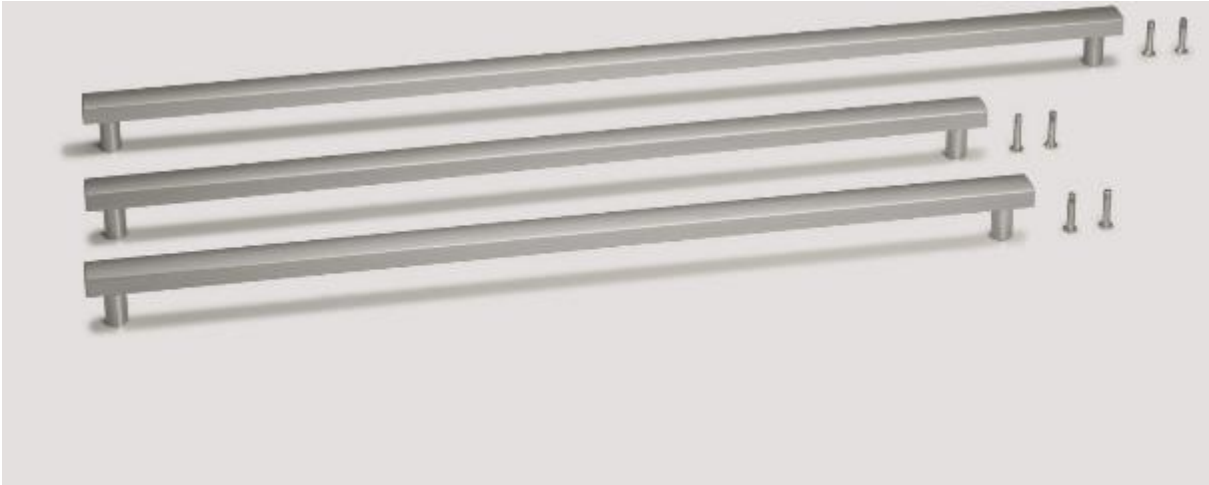


Description

This set comprises three robust stainless steel handles suitable for stainless steel panels.

Order Info		Models	Misc. Information (Dimension , Country Code, etc.)
Art.-No	PG		
9900327		ECN 6156 ECBN 6156	3 pcs

Set of aluminium handles (3 pieces)



Description

This set comprises three robust aluminium handles suitable for stainless steel panels.



Order Info		Models	Misc. Information (Dimension , Country Code, etc.)
Art.-No	PG		
9900281		ECN 5026 ECN 5036 ECBN 5066 SBS 95E3	3 pcs

Set of aluminium handles (3 pieces)



Description

This set comprises three robust aluminium handles suitable for stainless steel panels.



Order Info		Models	Misc. Information (Dimension , Country Code, etc.)
Art.-No	PG		
9900329		ECN 6156 ECBN 6156	3 pcs.
9900329		ECN 6256 337 (HC 2062); ECBN 6256 337, 213 (HCB 2062)	

Set of aluminium handles (4 pieces)



Description

This set comprises four robust aluminium handles suitable for stainless steel panels.



Order Info		Models	Misc. Information (Dimension , Country Code, etc.)
Art.-No	PG		
9900513		ECBN 6256 ECN 6256	4 pcs.

Side-by-side set



Description

With the help of the side-by-side set, two appliances can be set up next to each other. The gap between the appliances is maintained, and they are connected cleanly by means of the cover strip.

Order Info		Models	Misc. Information (Dimension , Country Code, etc.)
Art.-No	PG		
9901428		EGN 9171 EGN 9271 EKB 9271 EKB 9471 EGN 9471 EGN 9671 EKB 9671	

Side-by-side set



Description

With the help of the side-by-side set, two appliances can be set up next to each other. The gap between the appliances is maintained, and they are connected cleanly by means of the cover strip.



Order Info		Models	Misc. Information (Dimension , Country Code, etc.)
Art.-No	PG		
9900155		ECBN 6156 --> 001, 617, 136, 101, 111	

Side-by-side set



Description

With the help of the side-by-side set, two appliances can be set up next to each other. The gap between the appliances is maintained, and they are connected cleanly by means of the cover strip.



Order Info		Models	Misc. Information (Dimension , Country Code, etc.)
Art.-No	PG		
9900219		ECN 5026 ECBN 5066 --> 137, 237, 213	

Side-by-side set



Description

With the help of the side-by-side set, two appliances can be set up next to each other. The gap between the appliances is maintained, and they are connected cleanly by means of the cover strip.



Order Info		Models	Misc. Information (Dimension , Country Code, etc.)
Art.-No	PG		
9900183		ECN 6156 ECBN 6156 --> 137, 237, 213	

Side-by-side set



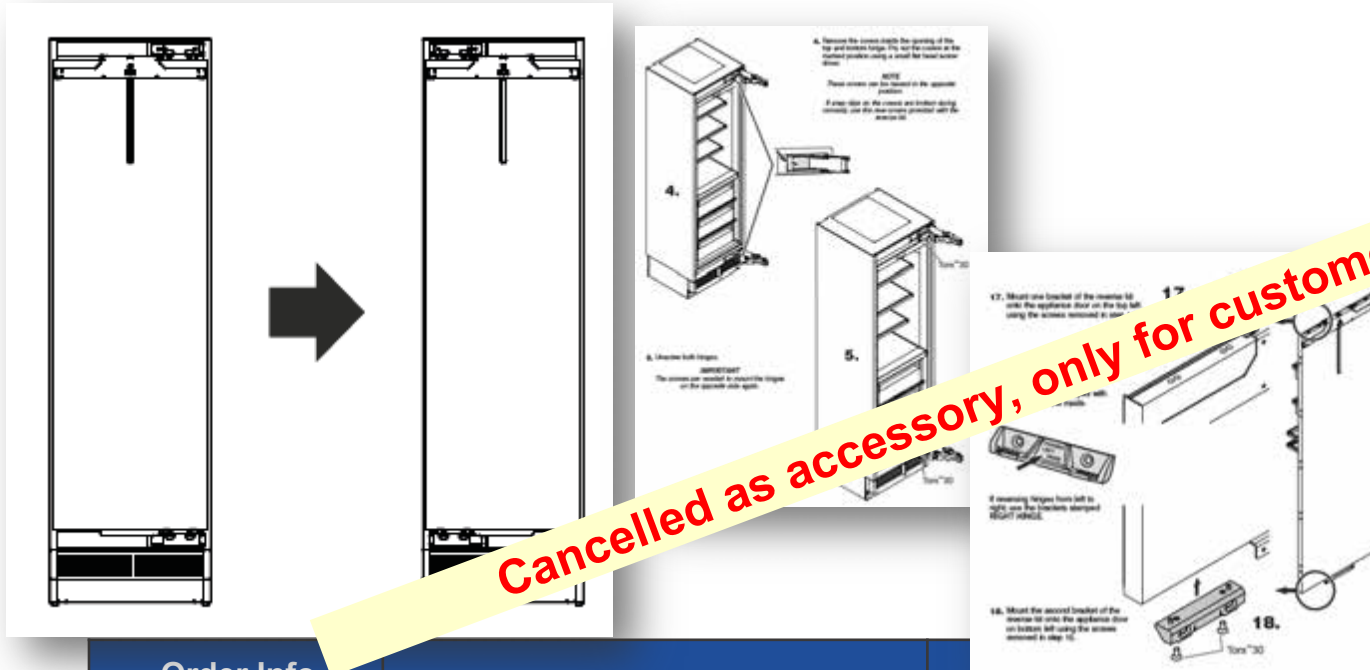
Description

With the help of the side-by-side set, two appliances can be set up next to each other. The gap between the appliances is maintained, and they are connected cleanly by means of the cover strip.

Order Info		Models	Misc. Information (Dimension , Country Code, etc.)
Art.-No	PG		
9900157		ECBN 5066 --> 001, 617, 136, 557	



Set of replacement door hinges



Description

This makes it possible to replace the door hinge. This allows the appliance to be used perfectly in its location and makes goods easy to access.

Only a trained specialist is allowed to install the kit for changing the door hinge side!

Order Info		Models	Misc. information (Dimension , Country Code, etc.)
Art.-No	PG		
9900165		ECN 6156 ECBN 6156	
9900167		ECN 5026 ECBN 5066	
9902399		EGN 9171, EGN 9271, EKB 9271 EKB 9471, EGN 9671, EGN 9471 EKB 9671	

Door opening limitation



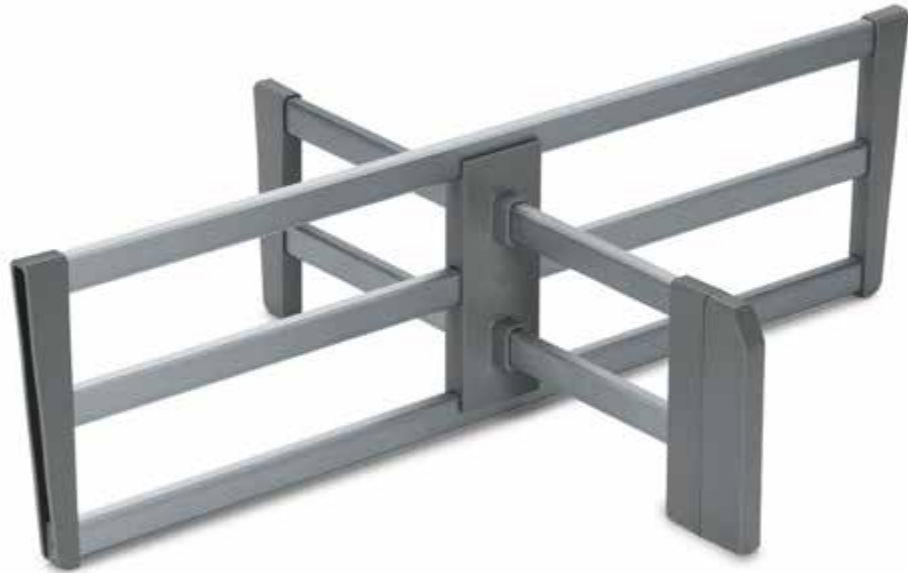
Description

The door opening angle is set to 115° at the plant, but this can be reduced to 90° by simply inserting the stable pin in the hinge. This prevents the door from crashing into walls or neighbouring furnishings and damaging them.

Order Info		Models	Misc. Information (Dimension , Country Code, etc.)
Art.-No	PG		
9096699		ECBN 5066 ECBN 6156 ECN 6156 ECN 5026 SBS 95E2	



BioFresh divider / FlexSystem



Order Info		Models	Misc. Information (Dimension , Country Code, etc.)
Art.-No	PG		
9901828		EKB 9271	24"
9901838		EKB 9471	30"
9902348		EKB 9671	36"

Description

The FlexSystem for the BioFresh safe facilitates the clear and flexible storage of food.



Ice cube scoop



Description

The practical and elegant ice cube scoop made from high-quality stainless steel allows large amounts of ice cubes to be taken from appliances with an IceMaker. Its funnel-shaped form ensures that ice cubes do not slip out of the scoop when being removed.

Order Info		Models	Misc. Information (Dimension , Country Code, etc.)
Art.-No	PG		
9901841		EGN 9171, EGN 9271, EGN 9471, EGN 9671 CBNbe/es 62xx, CBNPes 40xx / 4878 / 5066 CNes 6156/ 6256, CNPef 4036 / 4436 ECBN 5066/ 61xx, ECBN 62xx EBNes 3256, EGNes 3076 EWTNes 3056 SBNbs/ef/es xxxx SBS(bs/ef/es) models with icemaker SGN(bs/es) xxxx, SICBN 33xx, (S)ICN 33xx, SIGN 3576, SWTNes xxxx	

Ice cube tongs



Description

The high-quality, stainless steel ice cube tongs are the convenient accessory for removing ice cubes from the ice cube tray with ease. The recess at the lower end of the tool handle allows ice cubes to be grabbed and held easily.

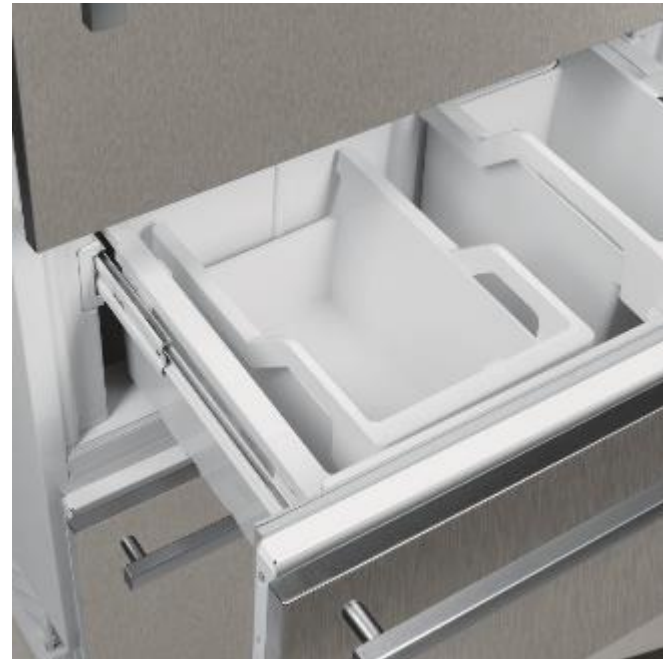
Order Info		Models	Misc. Information (Dimension , Country Code, etc.)
Art.-No	PG		
9901871		EGN 9171 EGN 9271 all freezers and fridge-freezers and fridges with 4 star compartment	

Ice cube drawer



Description

Ideal for any party or celebration. Once made, the high quality ice cube drawer is the perfect place for storing a large volume of ice cubes. If required, this can very easily be removed from the freezer drawer - for ice cold refreshment.



Order Info		Models	Misc. Information (Dimension , Country Code, etc.)
Art.-No	PG		
9901932		ECBN 5066 137 22 ECBN 5066 213 22 ECBN 5066 237 22 ECBN 5066 137 21 ECBN 5066 213 21 ECBN 5066 237 21 ECBN 6156 - all executions ECBN 6256 - all executions	

FreshAir activated charcoal filter and water filter set



Description

The set contains the FreshAir activated charcoal filter and a water filter. The FreshAir activated charcoal filter prevents odours by cleaning the incoming air so that everything smells as fresh and appetizing as it looks. The water filter reduces deposits, rust, and the taste and smell of chlorine. This means that there is always a supply of fresh water for cold drinks. The filters are easy to change and should be replaced every six months.

Order Info		Models	Misc. Information (Dimension , Country Code, etc.)
Art.-No	PG		
9902273		EKB 9471 EKB 9671	



Wine & Lifestyle related accessories

Stainless steel frame with handle



Description

With the high-quality and easy-to-install stainless steel frame the EWT model can be integrated in any kitchen. The robust stainless steel handle allows the door to be opened with little effort. The holes for the stainless steel handles are already provided in the stainless steel frame.

Order Info		Models	Misc. Information (Dimension , Country Code, etc.)
Art.-No	PG		
9901577		EWTdf 1653	906mm x 595mm x 19mm
9901575		EWTdf 2353	1233mm x 595mm x 19mm
9901573		EWTdf 3553	1816mm x 595mm x 19mm

Profile Frame



Description

The EWTdf appliance can be equipped with individual custom panels, which can be made from wood, for example, in order to integrate it harmoniously in the kitchen. Rough and cut edges can be covered with the aluminium profile frame.

Order Info		Models	Misc. Information (Dimension , Country Code, etc.)
Art.-No	PG		
9901075		EWTdf 1653	19 mm panel-thickness
9901079		EWTdf 2353	19 mm panel-thickness
9901080		EWTdf 3553	19 mm panel-thickness
9901081		EWTdf 1653	22 mm panel-thickness
9901082		EWTdf 2353	22 mm panel-thickness
9901083		EWTdf 3553	22 mm panel-thickness

Aluminium handle



Description

The robust aluminium handle for EWTdf 16 / 23 / 35 appliances allows the door to be opened with little effort. If you are using your own custom panels, you can purchase this handle separately and install it in your custom panel.

Order Info		Models	Misc. Information (Dimension , Country Code, etc.)
Art.-No	PG		
9901561		EWTdf 1653; EWTdf 2353; EWTdf 3553	

Accessory drawer



Description

The smooth-moving accessory drawers can be used to store wine accessories directly under the WKE 5 model wine storage refrigerators. A practical insert allows wine glasses to be stored safely. The accessory drawer expands the 45 alcove to a 60 niche.

Order Info		Models	Misc. Information (Dimension , Country Code, etc.)
Art.-No	PG		
9901084		WKEes 553	Stainless steel
9901085		WKEgb 582	Glass black
9901086		WKEgw 582	Glass white

Stainless steel bar handle



Description

In under-worktop wine niches, the standard aluminium handle can be replaced with a round stainless steel bar handle.

Order Info		Models	Misc. Information (Dimension , Country Code, etc.)
Art.-No	PG		
9901071		Following wine appliances „Wine under-worktop Facelift 2018“:UWTes 1672-21UWKes 1752-21UWKes 1762-21UKes 1752-21UKes 1762-21OKes 1760-21WTes 1672-21	

Lava stone box



Description

In order to protect wine corks from dehydration during long-term bottle storage, the humidity in the appliance can be increased using a damp lava stone. The lava stone is stored very conveniently and visually appealing in a custom high-end red beech box. The lava stone box contains a removable plastic bowl into which the water is poured to increase the humidity. The lava stone box can be positioned anywhere in the appliance.

Order Info		Models	Misc. Information (Dimension , Country Code, etc.)
Art.-No	PG		
99018200		For all wine appliances	Except: WTb 4212, Wtr 4211 as lava stone is already in the delivery status

Perforated shelf

Picture will be given later

Description

The perforated shelf is placed on the wooden shelf and thereby allows wine bottles to be stored upright and presented perfectly.

Cancelled as accessory

Order Info		Models	Misc. Information (Dimension , Country Code, etc.)
Art.-No	PG		
7746024		for wine appliances of 60 cm width	
7746026		for wine appliances of 70 cm width	

Clip-on labels



Description

The flexible clip-on labelling system provides a quick and orderly overview of the wines in store. With rewritable cards for easy replacement.

Order Info		Models	Misc. Information (Dimension, Country Code)
Art.-No	PG		
9086723	10	WKb 1812 WKr 1811 WKb 1802	67 / 44 / 11, for grid shelves 2 pcs
9094397	7	EWTdf/gb/gw UWKes 1752 - ab Index 21 UWTgb 1682 - ab Index 21 UWTes 1672 - ab Index 21 WTes 1672 - ab Index 21	2 pcs

Clip-on labels



Description

The flexible clip-on labelling system provides a quick and orderly overview of the wines in store. With rewritable cards for easy replacement.

Order Info		Models	Misc. Information (Dimension, Country Code)
Art.-No	PG		
9094559	12	As per catalogue	5 pcs

Bottle holder



Description

The robust and practical bottle holder increases the storage capacity of the appliance and provides completely safe storage for bottles. In addition, the bottle holder can be used to store open bottles or present fine wines.

Order Info		Models	Misc. Information (Dimension , Country Code, etc.)
Art.-No	PG		
7436193	09	WKt 6451 WKt 5552 WKt 5551 WKt 4552 WKt 4551 WKes 4552 UWKes 1752 UWKes 1762 WTes 1672 UWTes 1672 UWT 1682 UWTgb 1682 WKes 653	59 / 63 / 34 mm

Bottle presenter

NEW



Description

Skilfully highlight special bottles: the elegant bottle presenter puts your wine bottles in the limelight and draws attention to the wine label. It also provides a secure hold for opened bottles.

Order Info		Models	Misc. Information (Dimension , Country Code, etc.)
Art.-No	PG		
9882303		EWT 9175 EWT 9275	

NEW

Set of 3 bars for wooden shelf



Description

Whether large or small - now everyone fits in. With the additional wooden dividers, you can also store small wine bottles safely in your Liebherr wine cabinet. Simply insert the stays in the wooden shelf - that's it.

Order Info		Models	Misc. Information (Dimension , Country Code, etc.)
Art.-No	PG		
9903024		EWT 9175 EWT 9275	

NEW

FreshAir activated charcoal filter Monolith wine



Description

For optimum air quality: The FreshAir activated carbon filter cleans the circulating air and quickly binds unpleasant odours. We recommend replacing it annually - it's quite simple.

Order Info		Models	Misc. Information (Dimension , Country Code, etc.)
Art.-No	PG		
9882304		EWT 9275	Set of 3 active charcoal filters as EWT 9275 has three temperature zones

Wooden shelf



Description

The handmade board from untreated wood is optimally designed for safe storage of Bordeaux bottles. If the bottles are placed directly next to each other, it is possible to take full advantage of the volume.

Order Info		Models	Misc. Information (Dimension , Country Code, etc.)
Art.-No	PG		
9881261		WKt 5551 WKt 5552 WKt 4551 WKt 4552 WKes 4552	572 / 28,1 / 540 mm
9881263		WKr 4211 WKr 3211 WKb 4212 WKb 3212 WTb 4212 WTr 4211	494,5 / 28,1 / 540 mm

Wooden shelf



Description

The handmade board from untreated wood is optimally designed for safe storage of Bordeaux bottles. If the bottles are placed directly next to each other, it is possible to take full advantage of the volume.

Order Info		Models	Misc. Information (Dimension , Country Code, etc.)
Art.-No	PG		
7112159	20	WKt 5551 WKt 5552 WKt 4551 WKt 4552 WKes 4552	572 / 28,1 / 540 mm
7112113	19	WKr 4211 WKr 3211 WKb 4212 WKb 3212 WTb 4212 WTr 4211	494,5 / 28,1 / 540 mm

Lava stone



Description

In the Vinothek temperature-control wine cabinet, humidity can be increased by means of a lava stone if necessary.

Order Info		Models	Misc. Information (Dimension , Country Code, etc.)
Art.-No	PG		
9591517	13	WTb 4212 WTr 4211	

Presentation shelf



Description

The robust presentation shelf is made from untreated wood and is ideal for storing open bottles or presenting bottles in an appealing way. The wooden shelf can be inserted in the wine appliance at various heights.

Order Info		Models	Misc. Information (Dimension , Country Code, etc.)
Art.-No	PG		
7111736	20	WKb 4612 WKb 4611 WKb 4112 WKgb 113 WKpb 4612	542 / 453 / 28 mm
7112043	24	WTes 5972 WTes 5872	
7113619	27	WKt 5551 WKt 5552 WKt 4551 WKt 4552 WKes 4552	572 / 28,1 / 540 mm

Wire shelf, galvanised



Description

Whenever an additional shelf is needed in a wine storage refrigerator, it can be created quickly with this stable wire shelf from galvanised steel.

Order Info		Models	Misc. Information (Dimension , Country Code, etc.)
Art.-No	PG		
7112035	16	WKb 1812 WKr 1811 WKb 1802	494,5 / 11,2 / 438 mm

Underbody cover for wall mounting



Description

The underbody cover can be used to cover the undersides of wall-mounted compact appliances.

Order Info		Models	Misc. Information (Dimension , Country Code, etc.)
Art.-No	PG		
9590519	22	WKes 653 ZKes 453	424 / 440 / 20 mm

Pull-out drawer



Cancelled as accessory

Description

The pull-out drawer on telescopic rails provides perfect and safe storage for bottles. It is designed for storing Bordeaux bottles and offers a good overview and fast access.

Order Info		Models	Misc. Information (Dimension , Country Code, etc.)
Art.-No	PG		
9366747	31	WKb 4612, WKpb 4612	

Pull-out wooden shelf



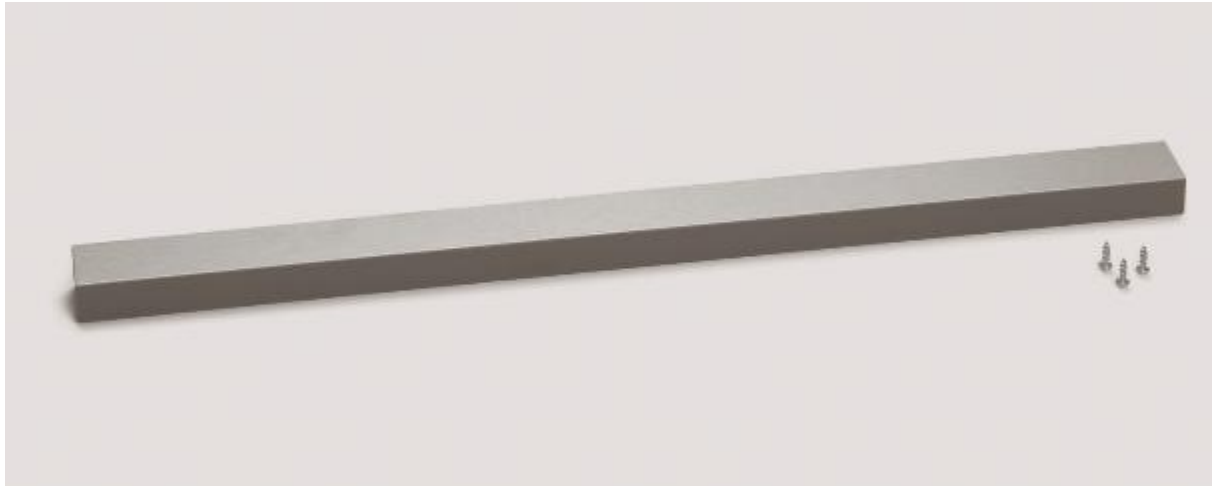
Cancelled as accessory

Description

The pull-out drawer on telescopic runners is handmade from untreated wood and provides perfect and safe storage for bottles. The wooden shelf is designed for storing Bordeaux bottles and offers a good overview and fast access. If the bottles are placed directly next to each other, it is possible to take full advantage of the volume.

Order Info		Models	Misc. Information (Dimension , Country Code, etc.)
Art.-No	PG		
9455750	26	WKb 4612, WKpb 4612	

Equaliser trim



Order Info		Models	Misc. Information (Dimension , Country Code, etc.)
Art.-No	PG		
9901601		UWTes 1672 UWKes 1762 UKes 1762	

Description

In order to create a single visual unit, the trim can be used to compensate the distance with the neighbouring furniture.



Equaliser trim



Order Info		Models	Misc. Information (Dimension , Country Code, etc.)
Art.-No	PG		
9901599		UWTgb 1682	Glass black trim

Description

If the decor panel in an under-worktop wine appliance is not high enough, this can be compensated with the trim.



Equaliser trim



Order Info		Models	Misc. Information (Dimension , Country Code, etc.)
Art.-No	PG		
9900073		WKEes 553	Stainless steel trim

Description

In order to create a single visual unit, the trim can be used to compensate the distance with the neighbouring furniture.

Closes the gap to the decor frame if the decor panel is too short.



Fixing bracket



Description

The fixing bracket for the cover strip in under-counter wine appliances can be conveniently attached at the top or bottom in order to seal the alcove. In addition to the visual aspect, this prevents dust and dirt collecting on the appliance.



Order Info		Models	Misc. Information (Dimension , Country Code, etc.)
Art.-No	PG		
9902240		UWTes 1672, UWTgb 1682, UWKes 1762, UKes 1762	


Retrofit kit/Overlay kit for under-worktop wine appliances



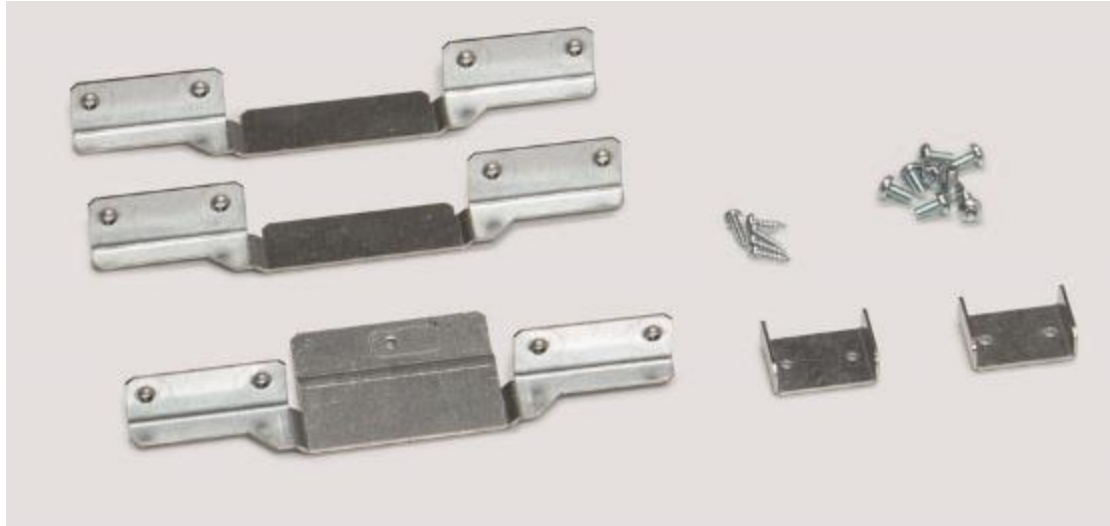
Description

With the conversion kit for undercounter wine appliances with stainless steel finish, an individual custom frame can be attached in order to integrate it decoratively into its set-up location. The scope of delivery includes hinges, brackets and screws.

Dimensions based on US standard.

Order Info		Models	Misc. Information (Dimension , Country Code, etc.)
Art.-No	PG		
9590131	25	UWTes 1672, UWKes 1762, UKes 1762	 7084 884-00 ageanleitung Over

Side-by-side set



Description

With the help of the side-by-side set, two appliances can be set up next to each other. The gap between the appliances is maintained, and they are connected cleanly by means of the cover strip.



Order Info		Models	Misc. Information (Dimension , Country Code, etc.)
Art.-No	PG		
9901647 9902272	28	UWTes 1672 UWTgb 1682 UWKes 1762 UKes 1762	